

# PAINTED PEOPLE

# Painted People

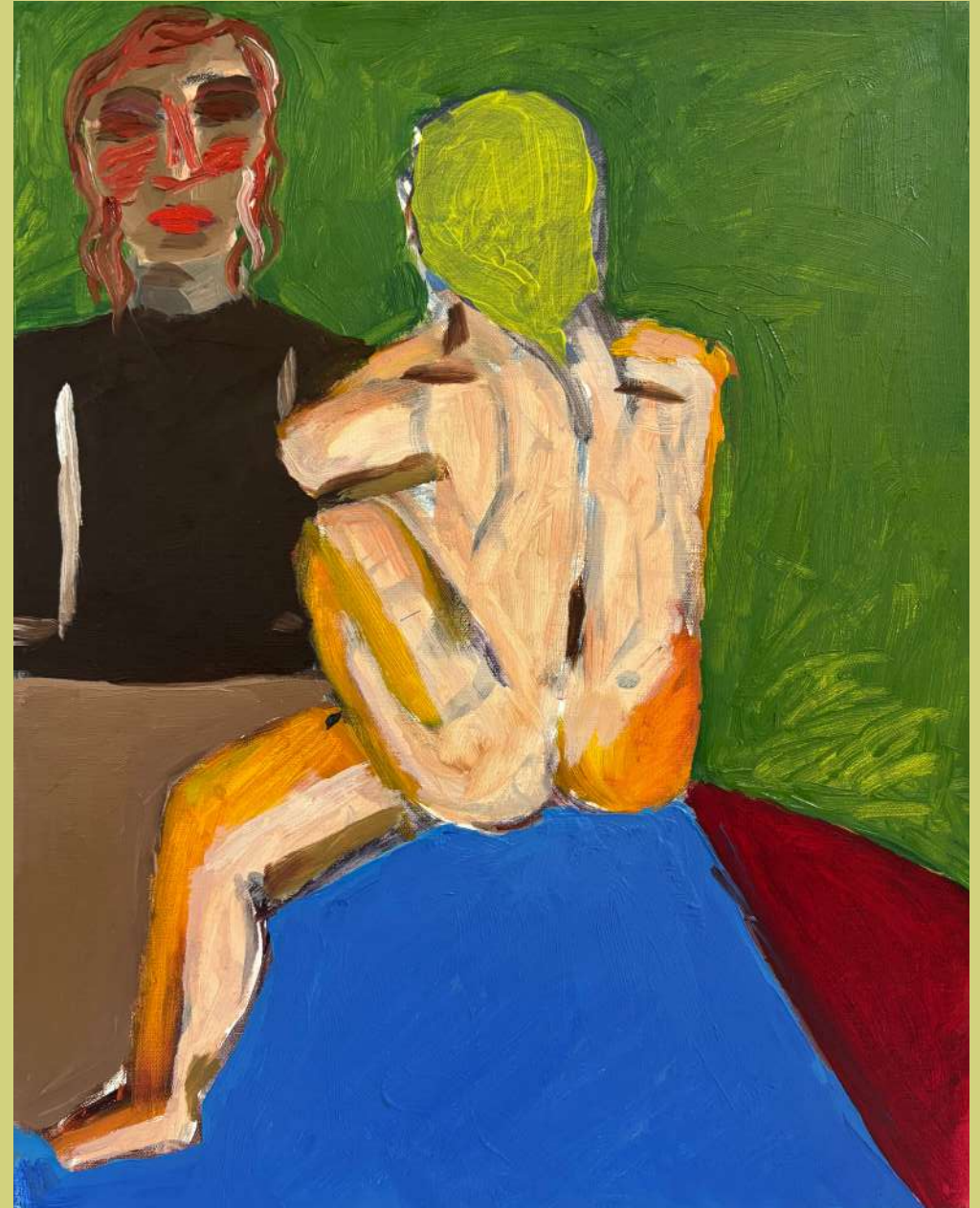
Work from the Painting Class and the Core Arts archives 1st April 2026

The artists in this exhibition offer various takes on the depiction of the human figure. Scrutinised close up, viewed from a distance, or appearing as strange hybrids of human and animal form. Some works are transcribed from examples of historical European portraiture, others re-route the conventions of 20th Century Modernism.

Many of the paintings are derived from online digital imagery - film stills, reportage and Pop culture.

All the artists in the exhibition use paint to bring the human form to life, creating vivid worlds and personas.

Dr. Sadie Murdoch

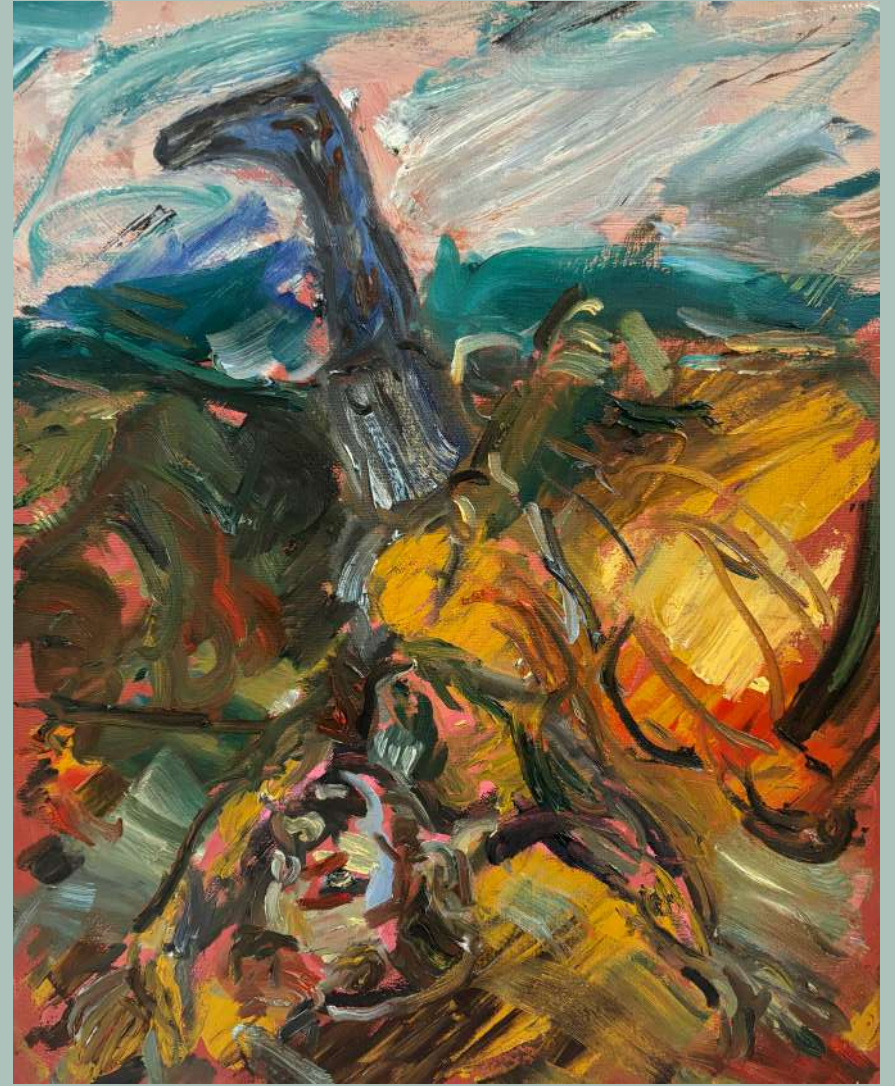


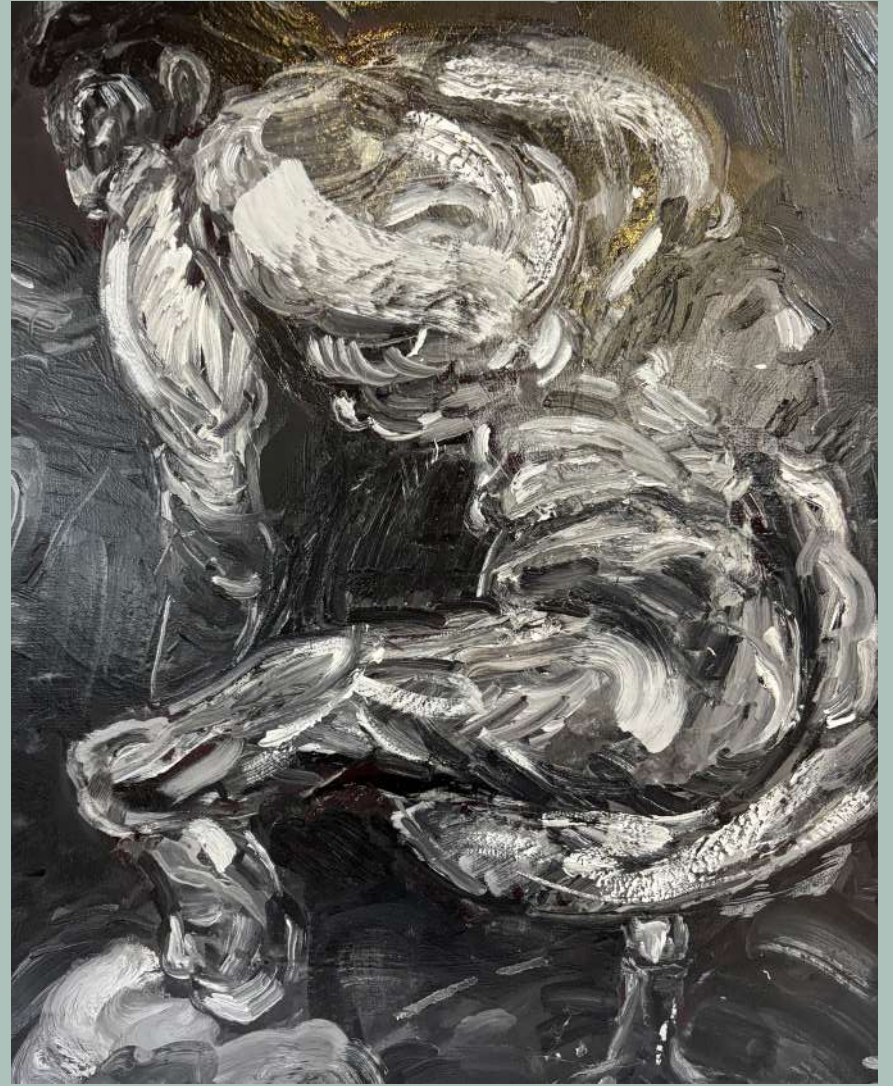
# Terry





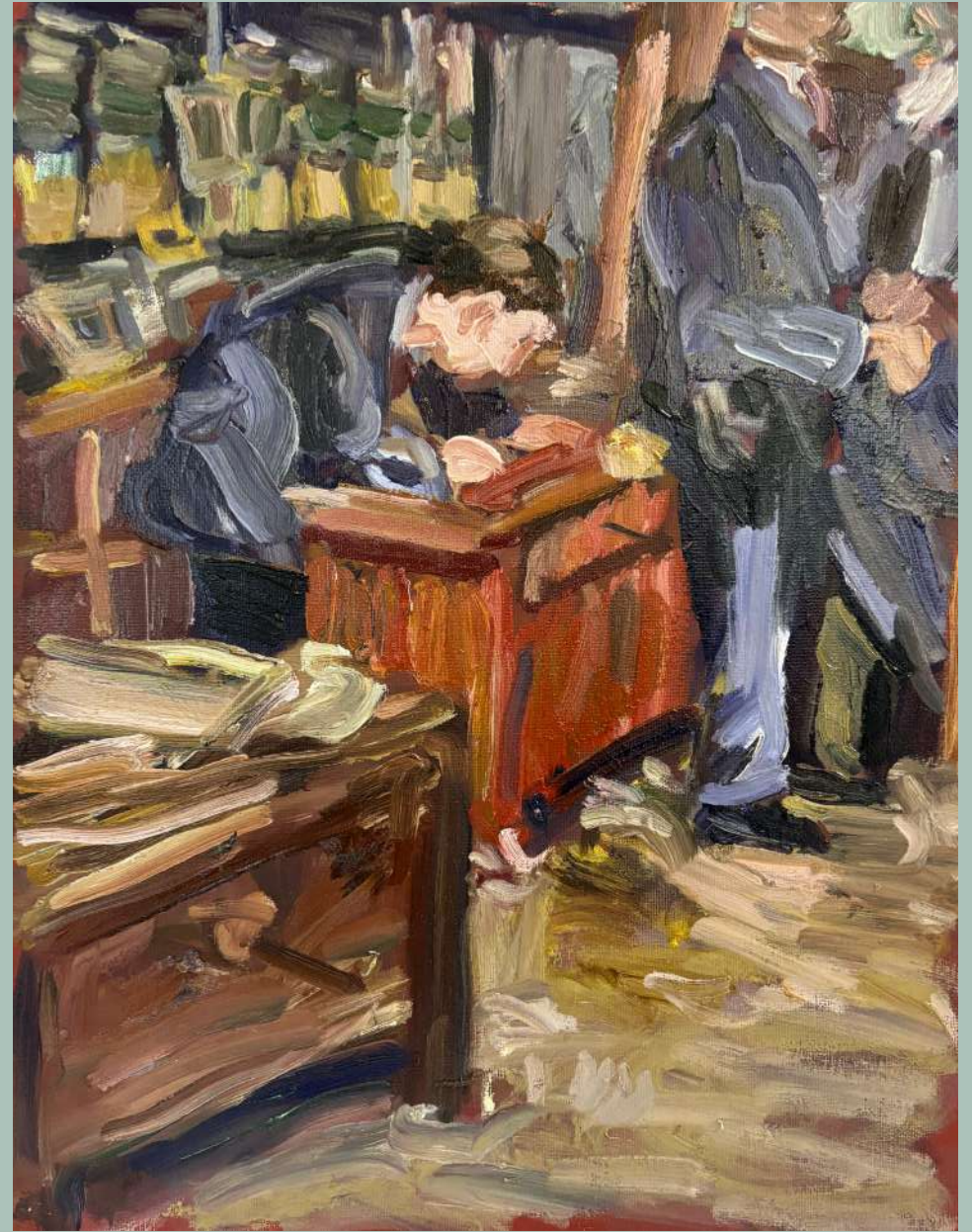


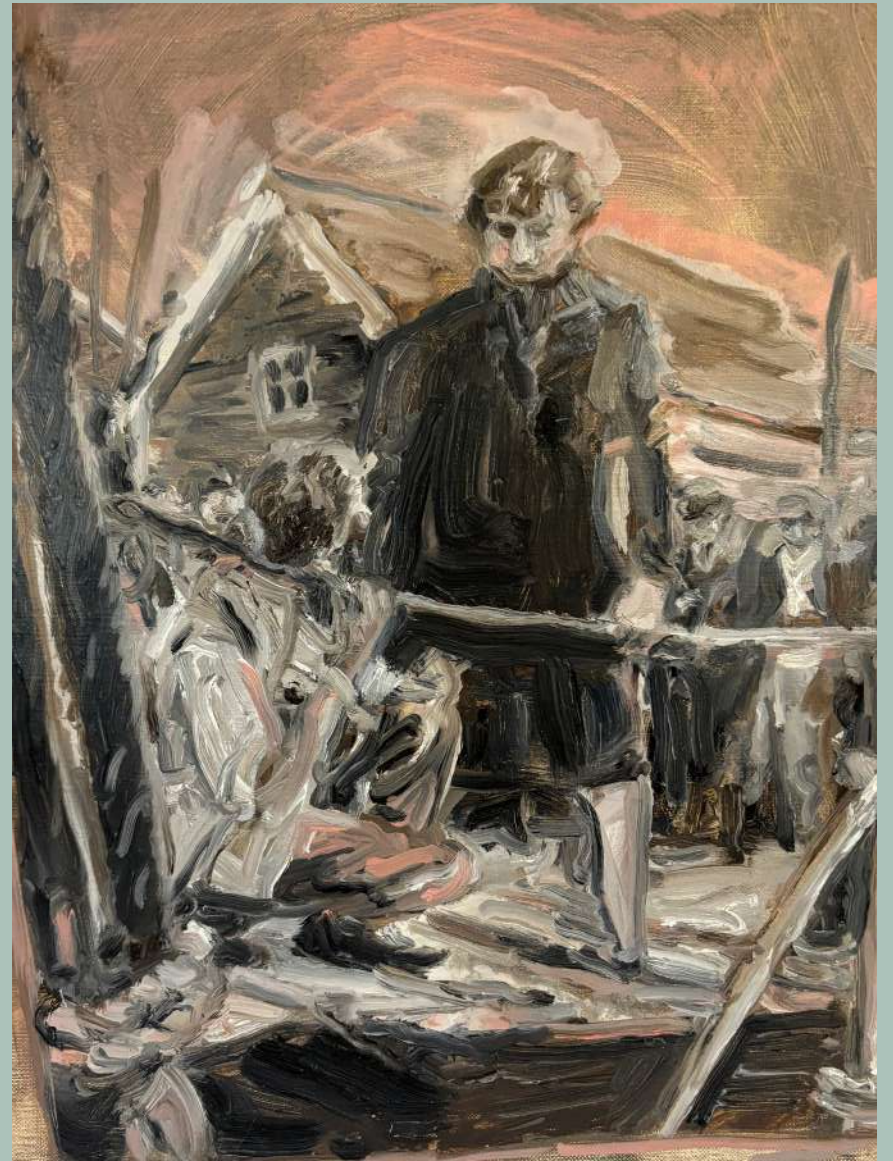








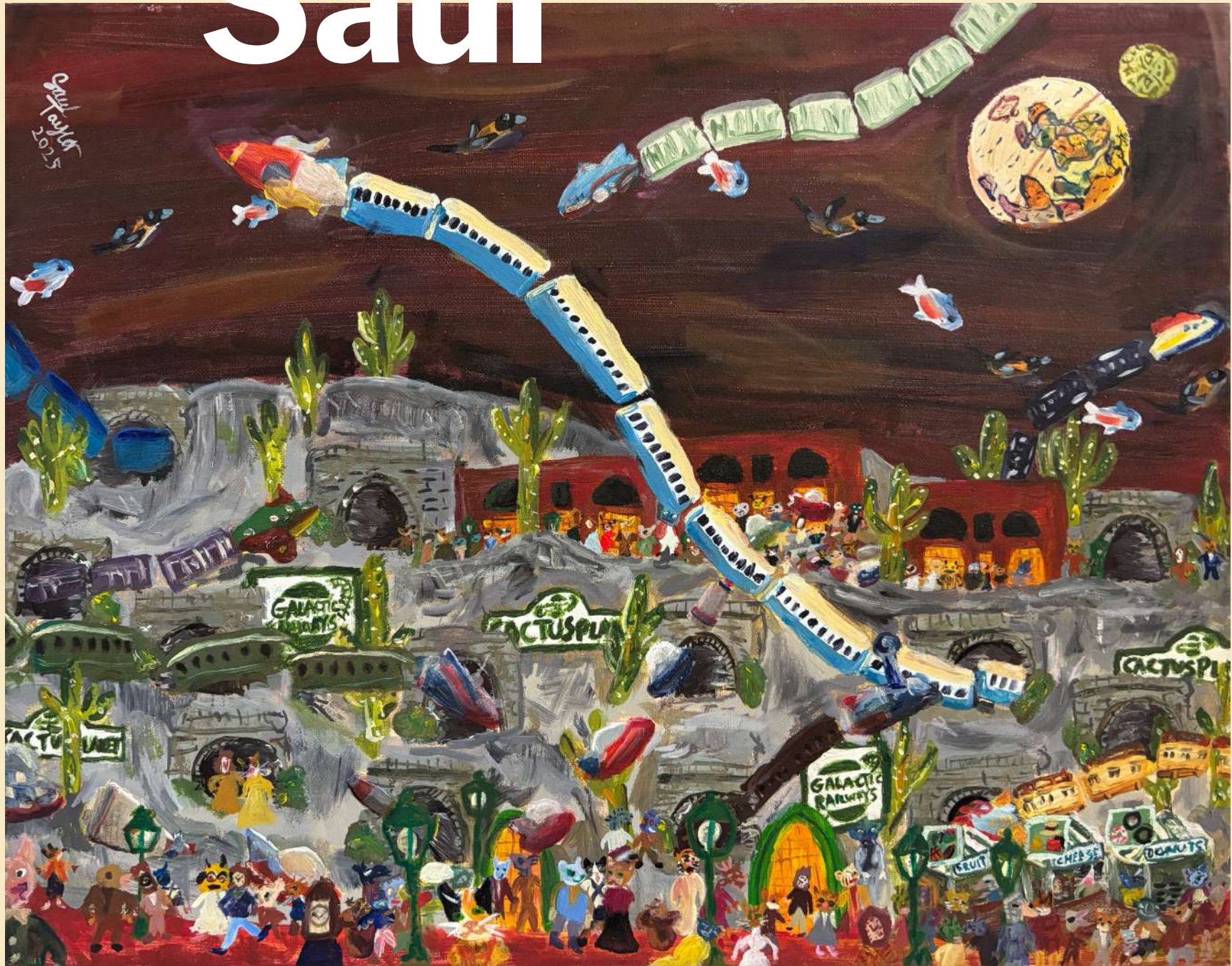




# Asil

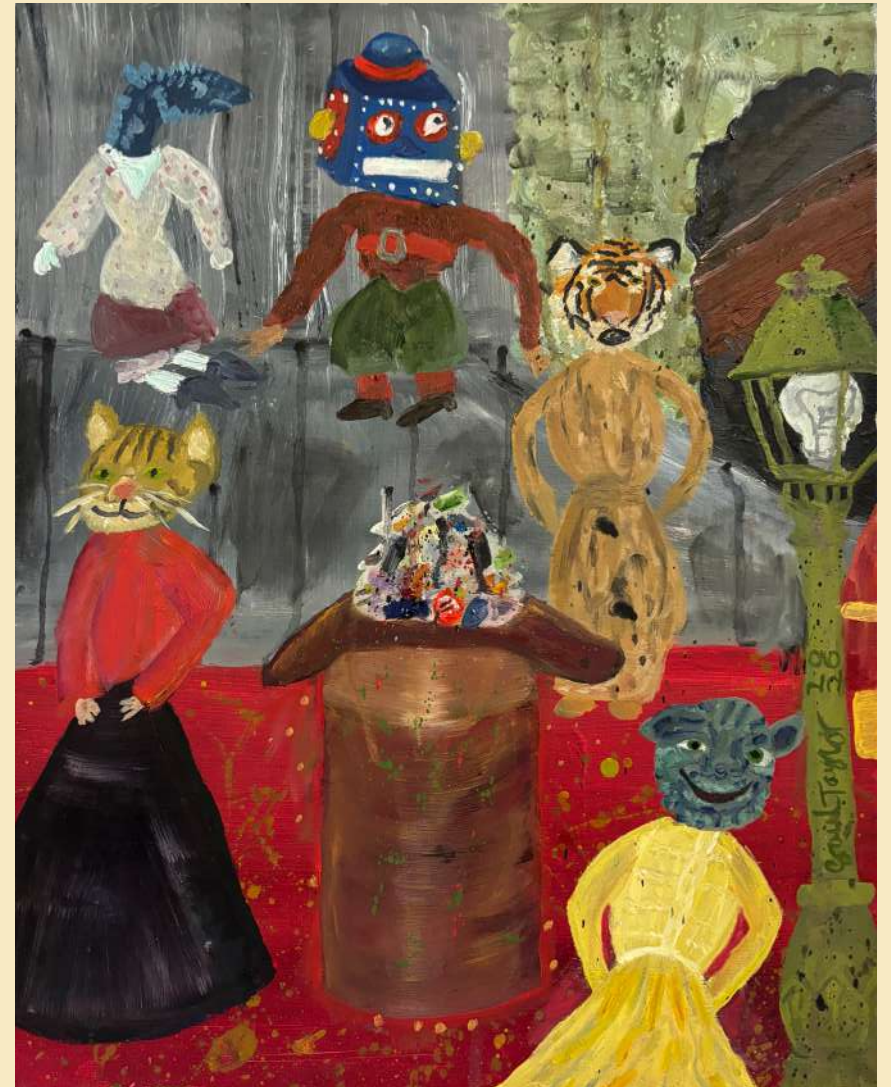
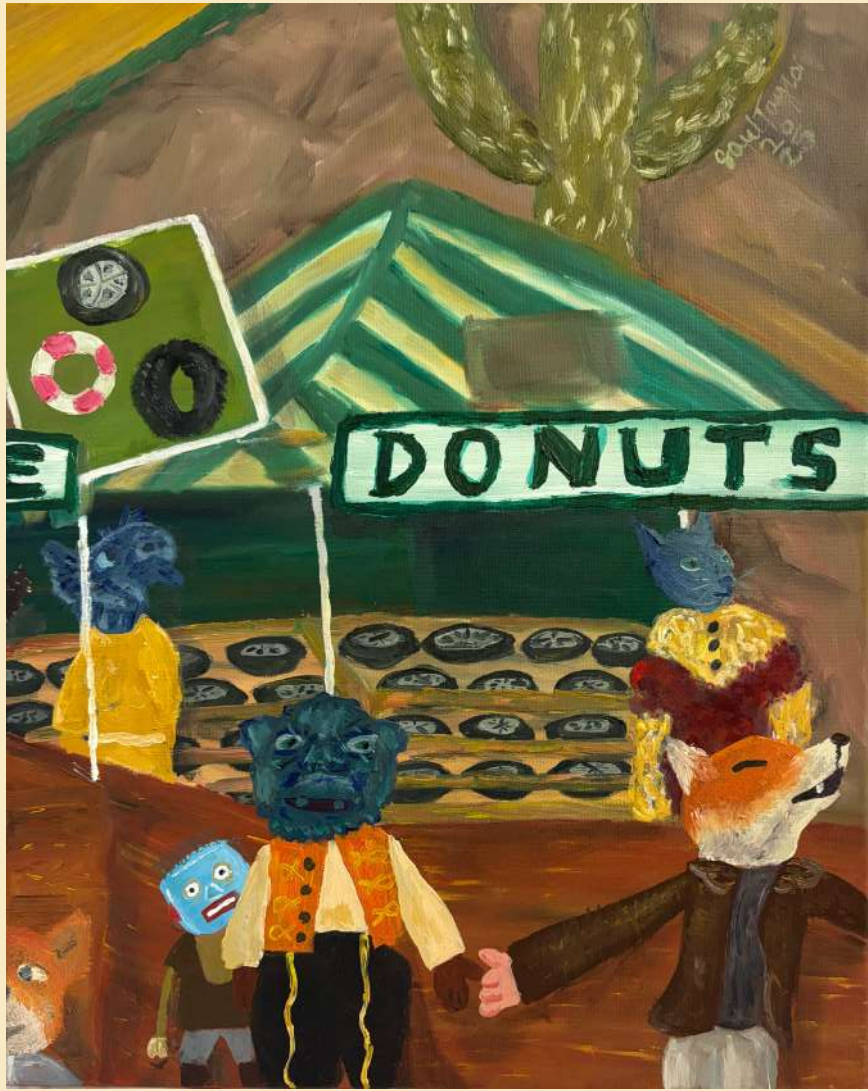


# Saul













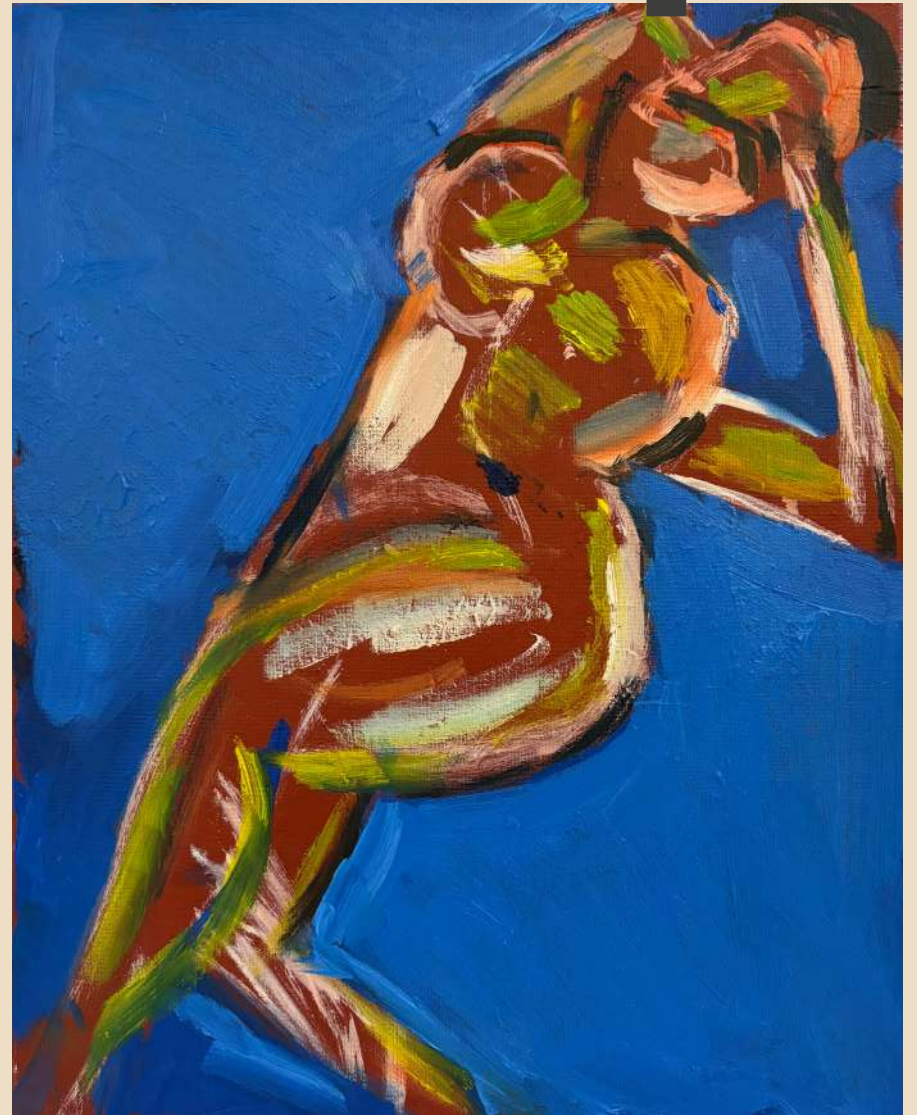
Spaulding 2025



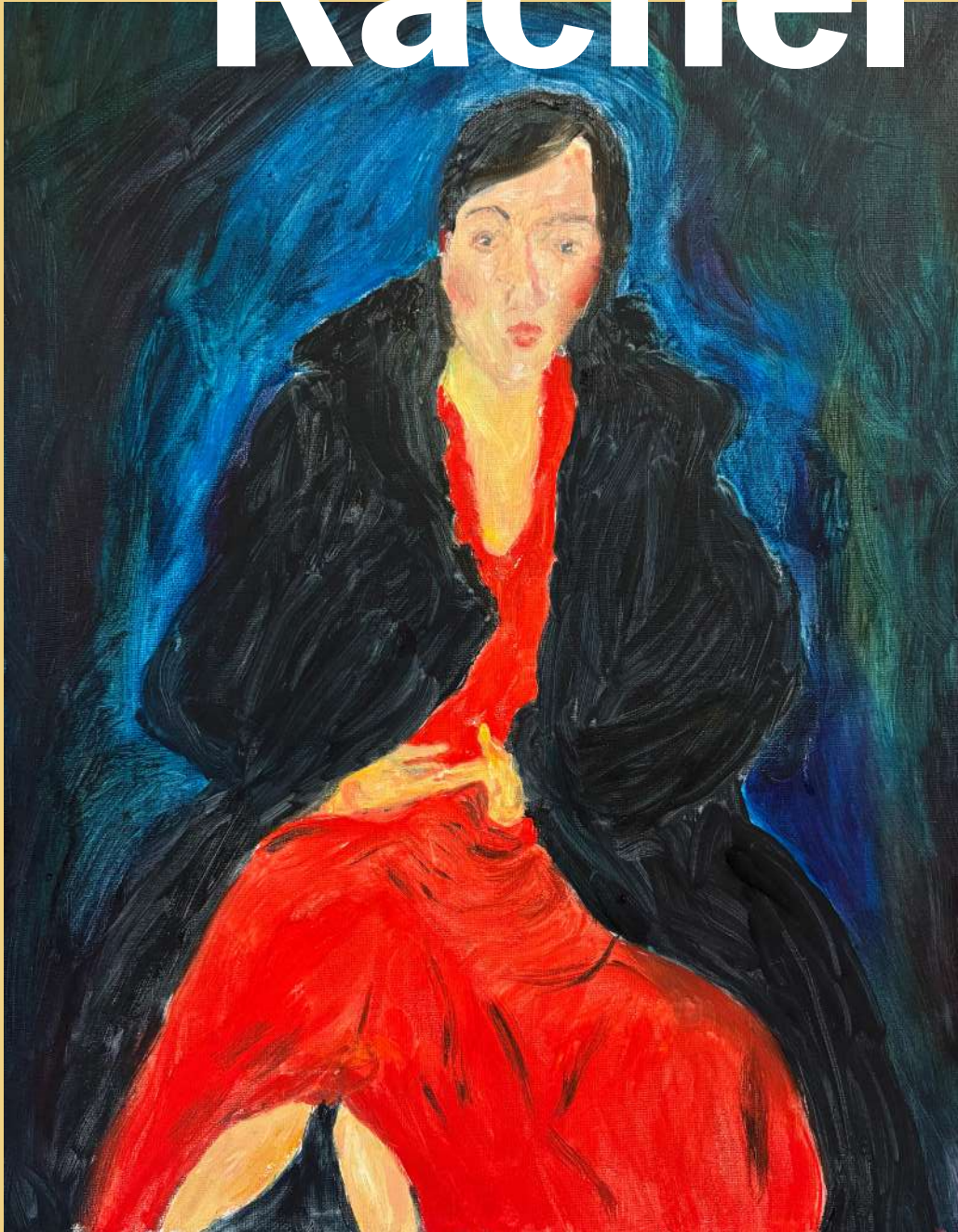
# Serena



# Joseph



# Rachel



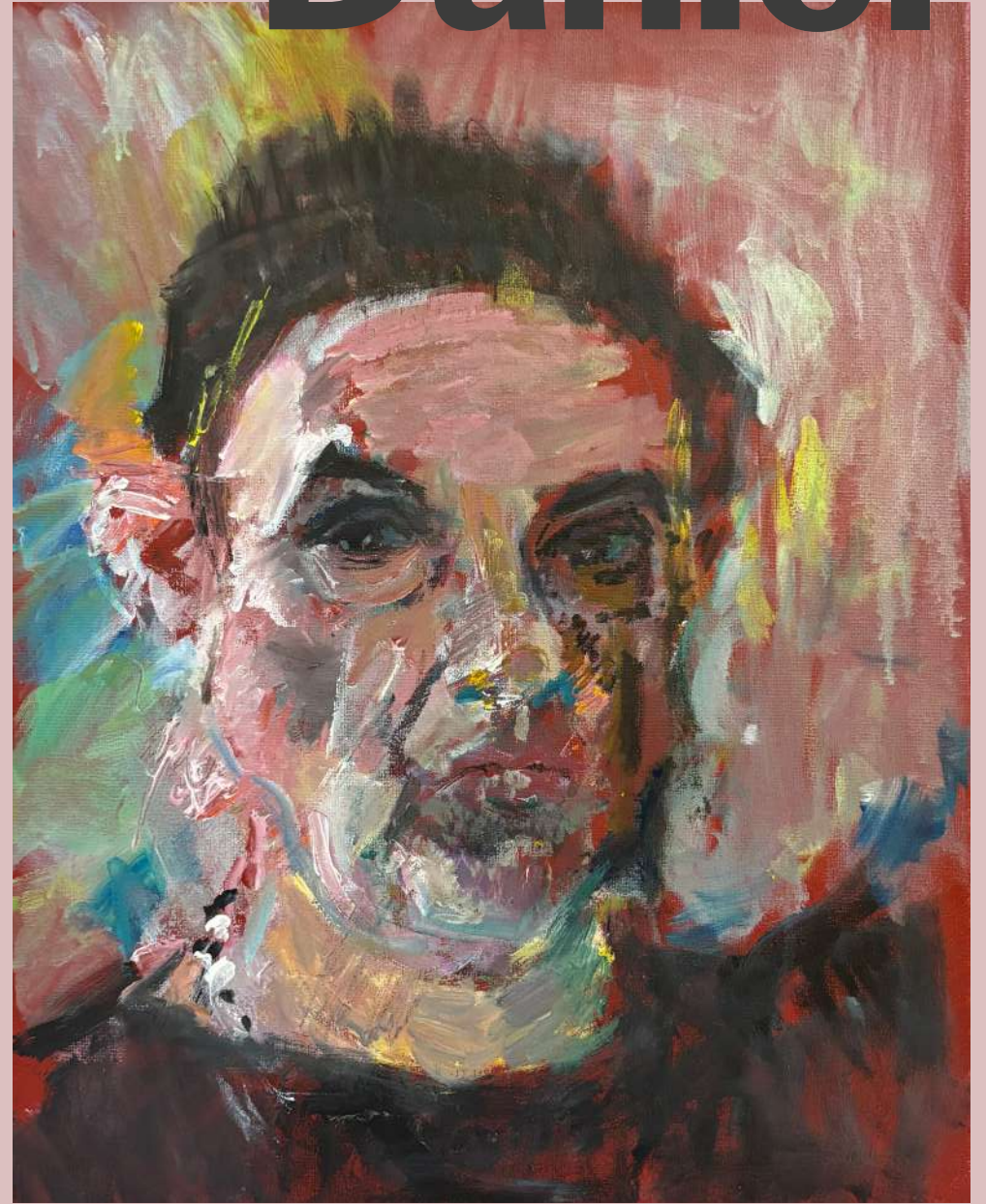
# Jak



# Tai



# Daniel



# Ben



# Bri



# Gary



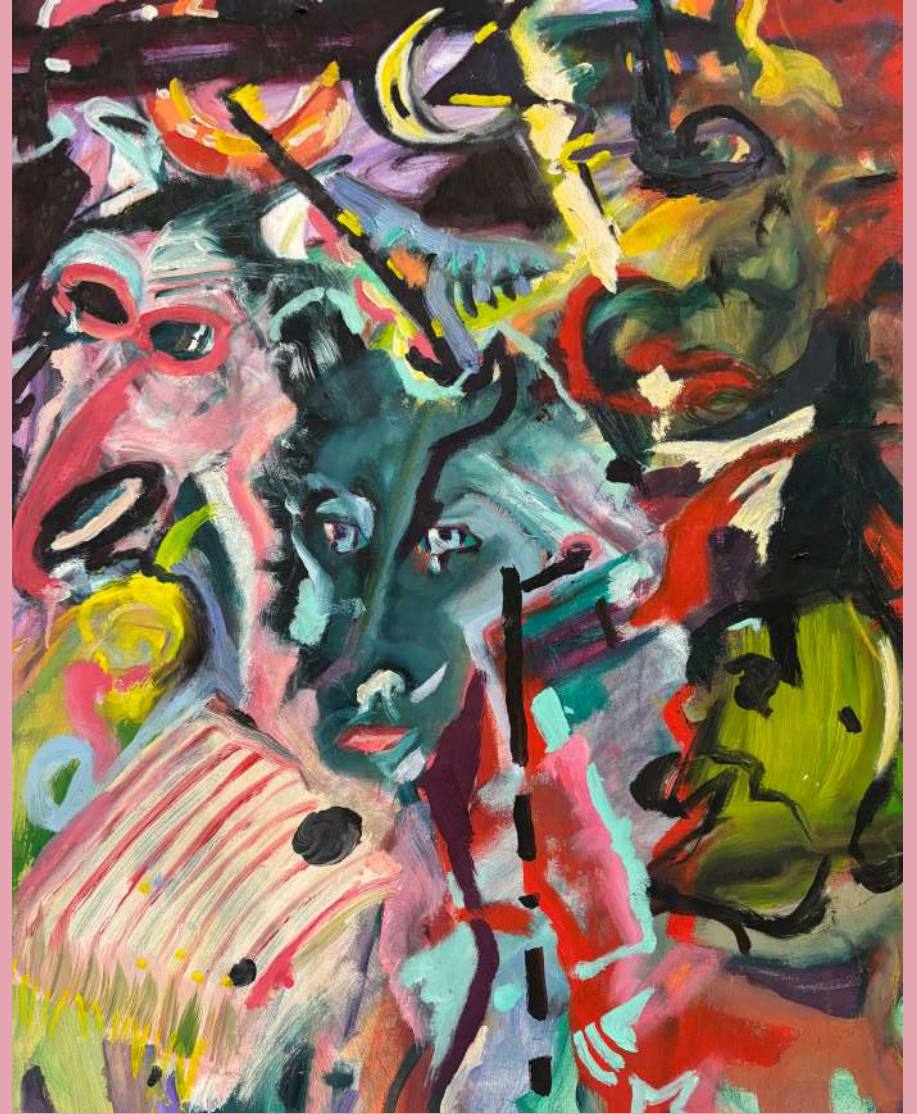
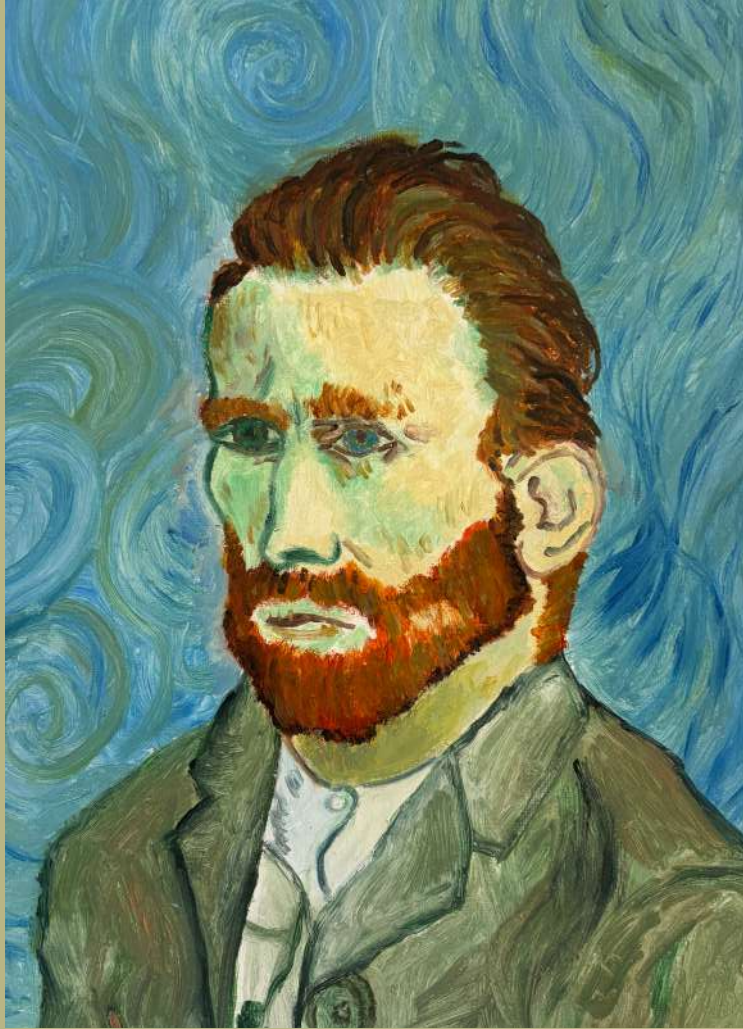
# David



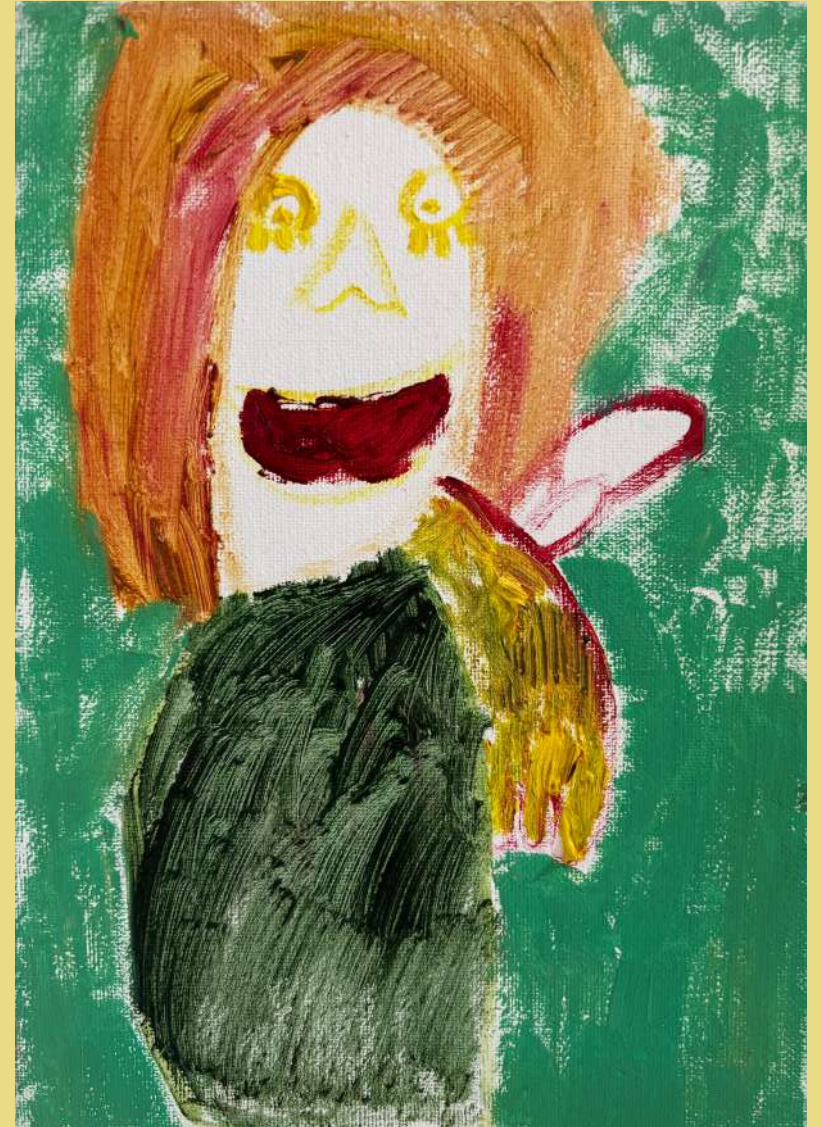
# Magnus



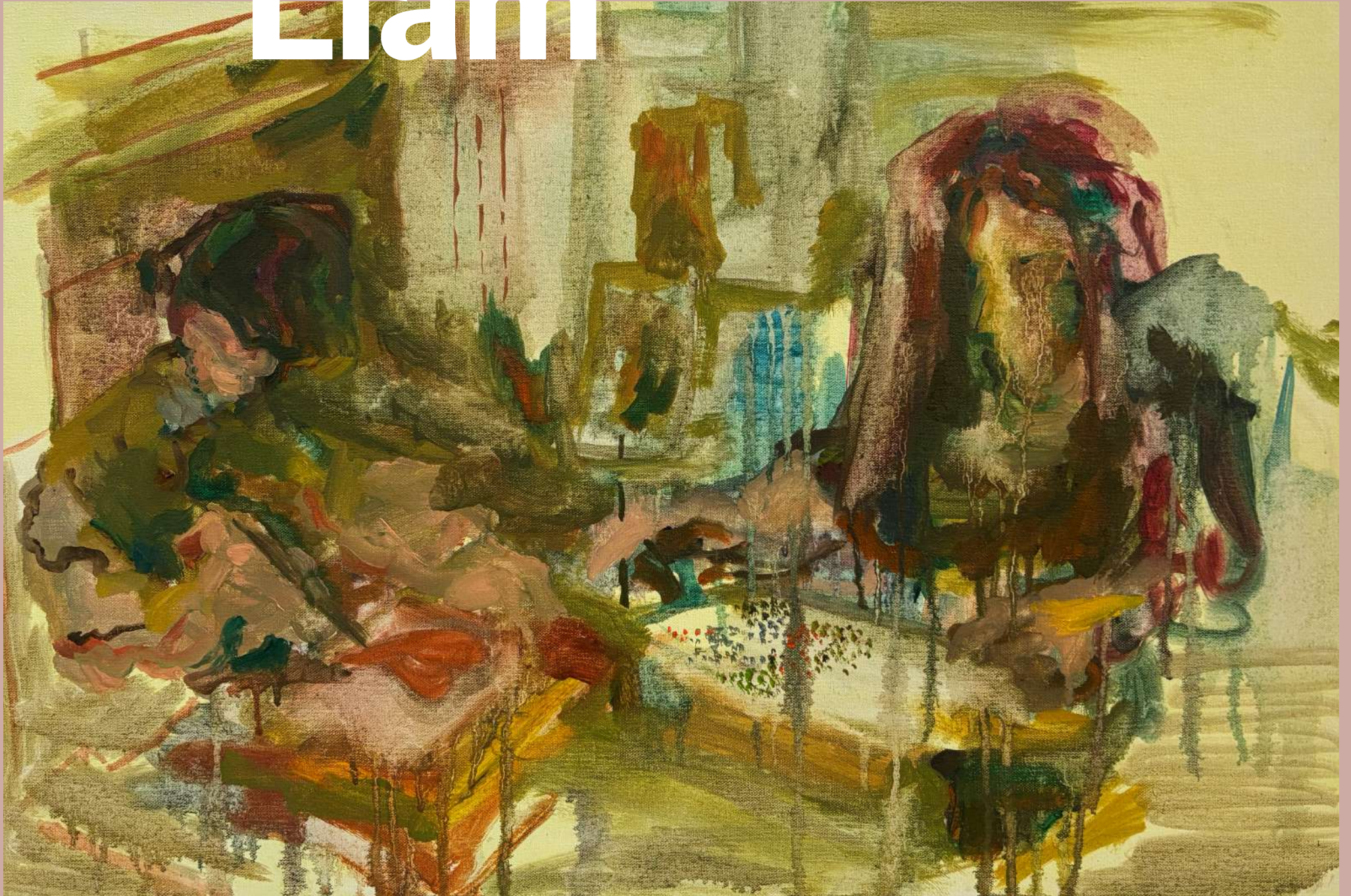
# Tam



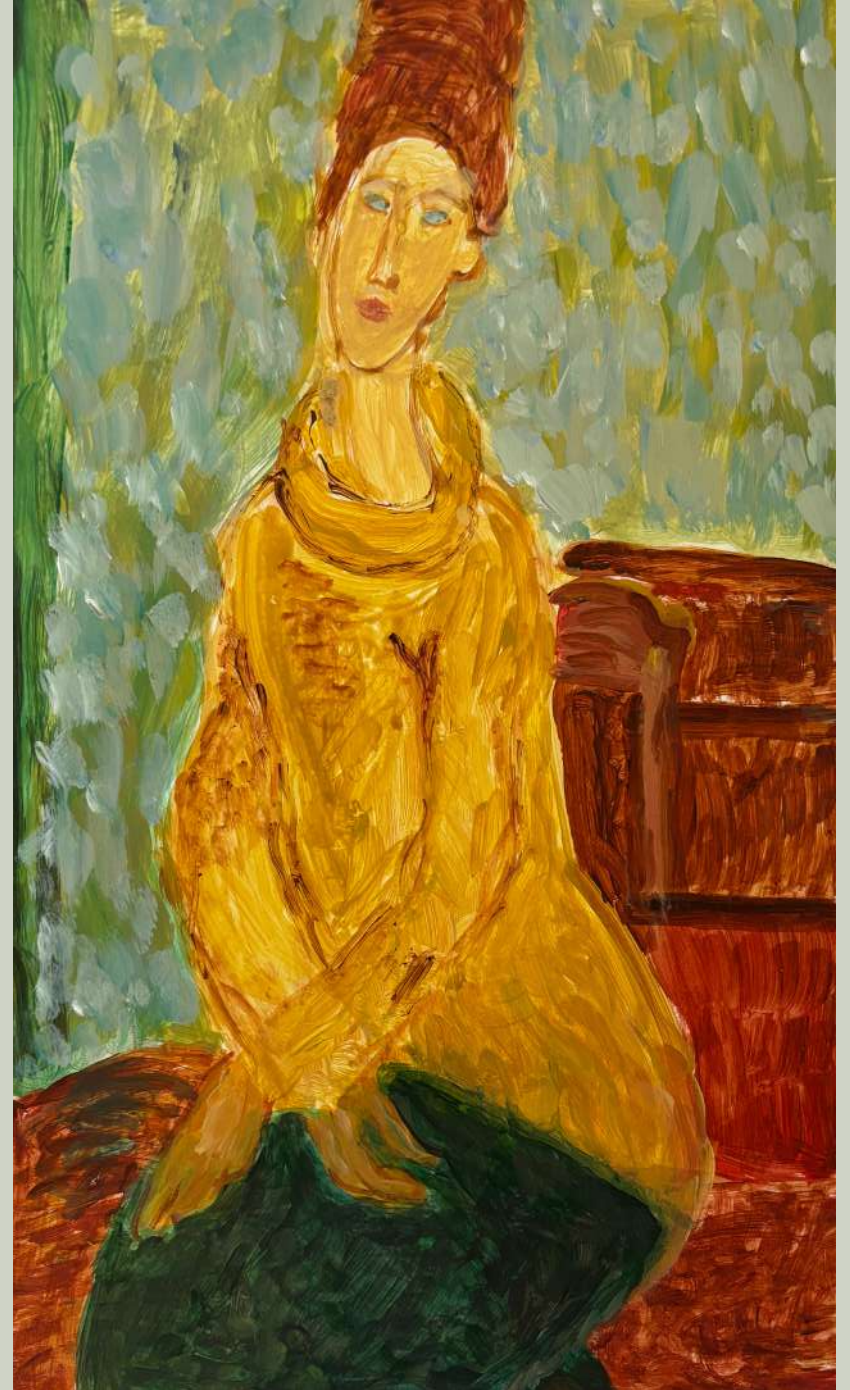
# Will

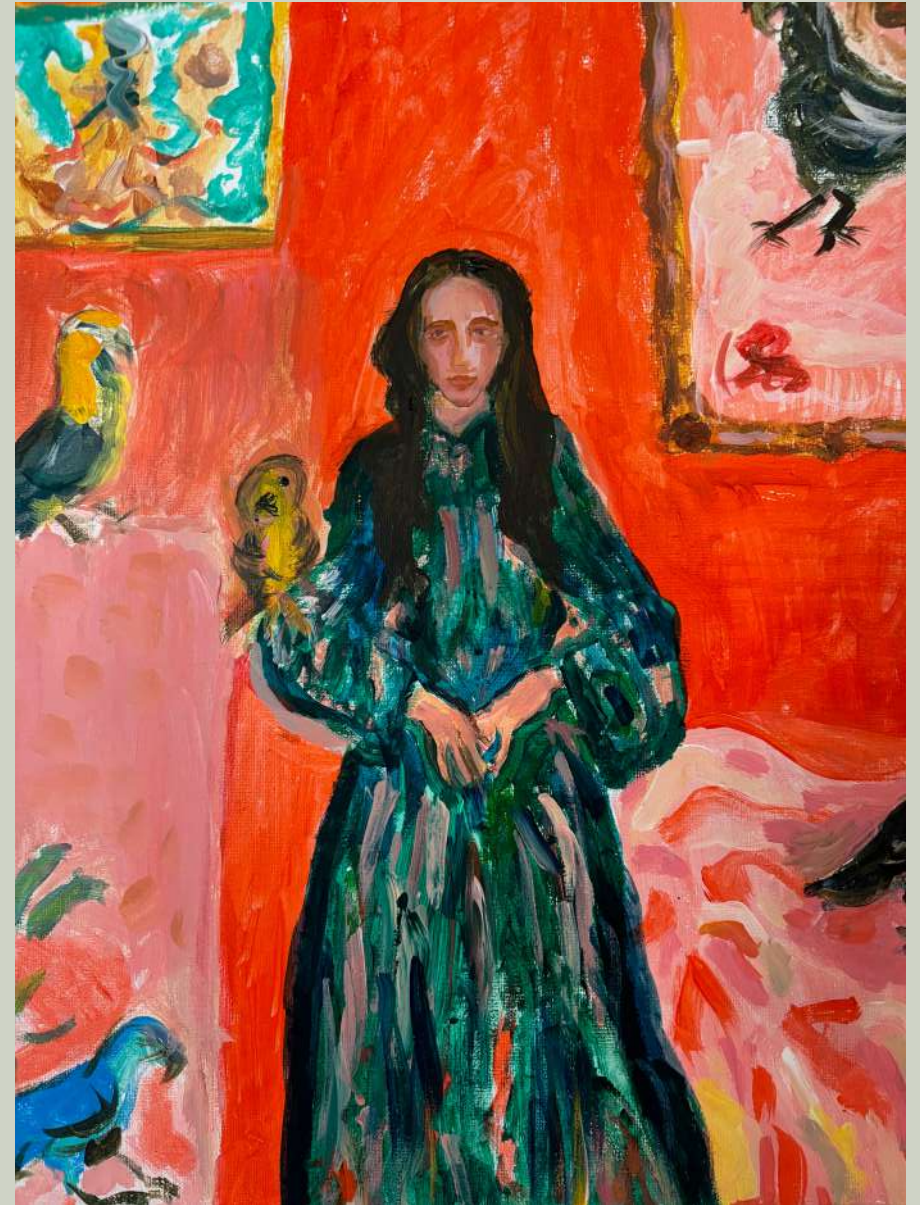


# Liam



# María







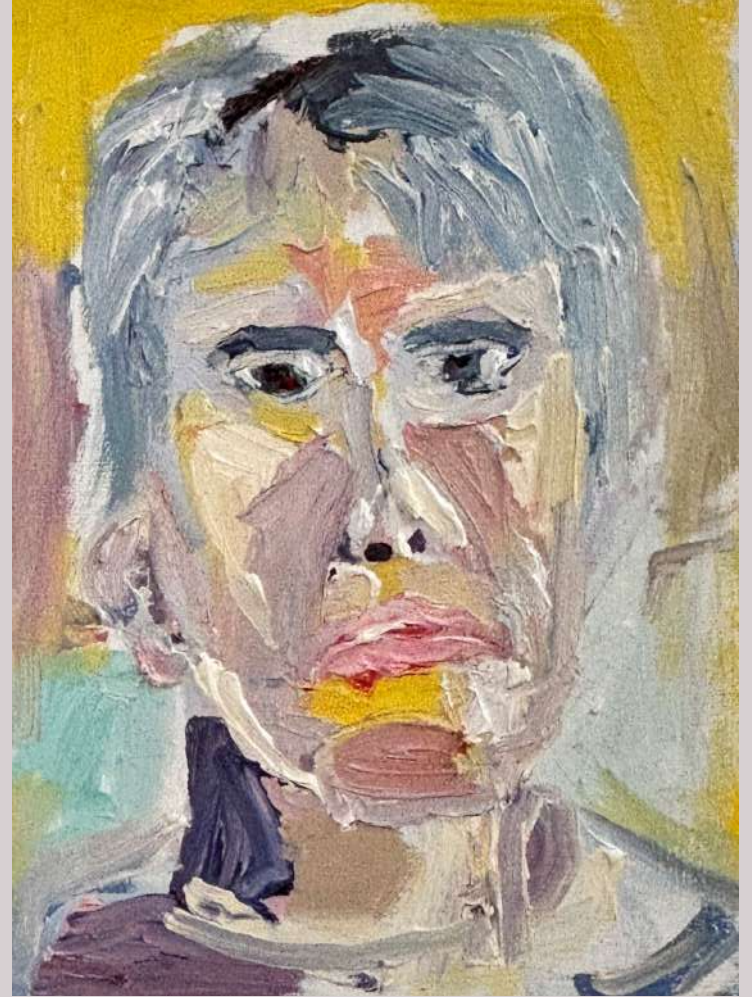
# Archive



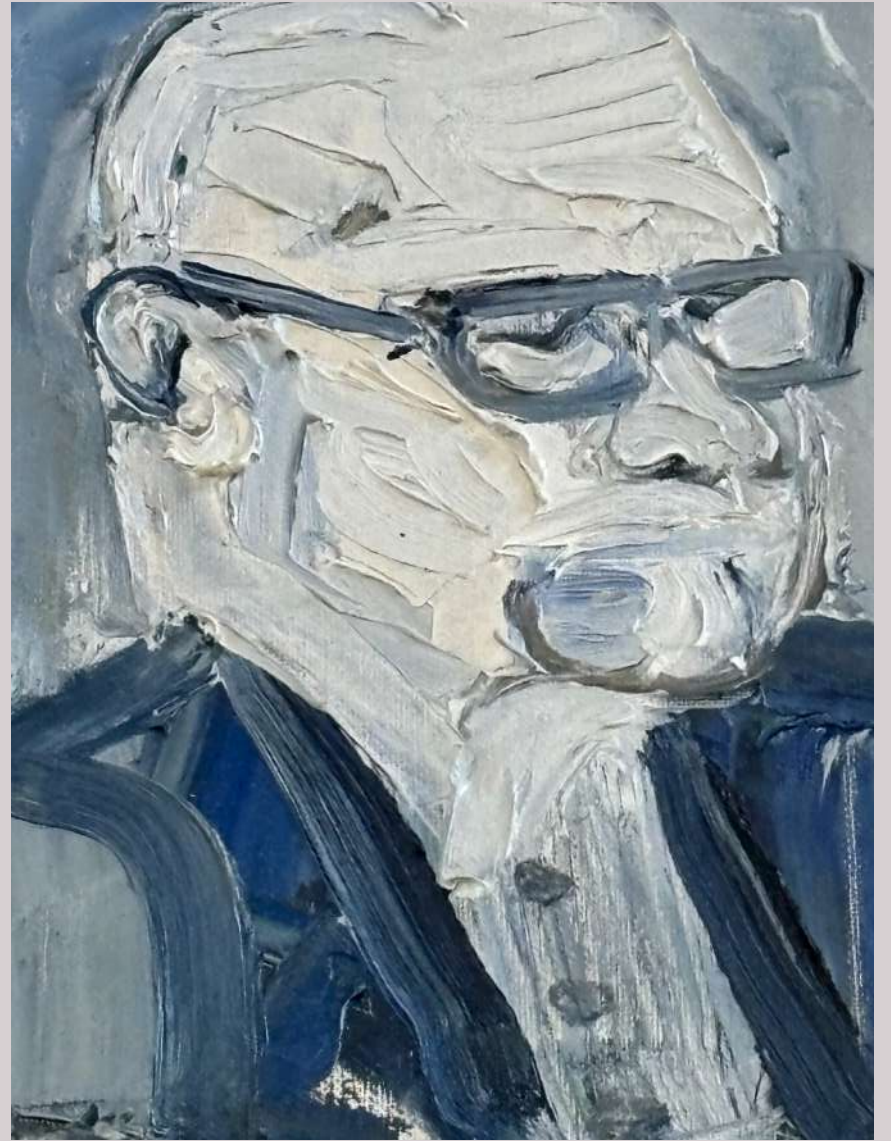














Core Arts  
promoting positive mental health  
[www.corearts.co.uk](http://www.corearts.co.uk)

© published April 2026, cover image © Serena March

Core Arts, 1 St Barnabas Terrace, London E9 6DJ

020 8533 3500 | [mail@corearts.co.uk](mailto:mail@corearts.co.uk)

[www.facebook.com/coreartshackney](https://www.facebook.com/coreartshackney)

[www.instagram.com/coreartshackney](https://www.instagram.com/coreartshackney)

[www.vimeo.com/corearts](https://www.vimeo.com/corearts)

Charity no: 1043588

Company no: 2985939

