



# Landscape Format

**Core Arts**  
**December 2025**



# Landscape Format

**Light and colour are different in a rural landscape, more embedded in the materiality of the seasons. It is the light you will see, when you find yourself travelling to the outskirts of a city or town, noticing the way space opens up between buildings and the horizon heaves into view. It is a landscape format: things are arranged horizontally, here a figure, a meadow, woodland, a river; enchanting, wild, tranquil, familiar.**

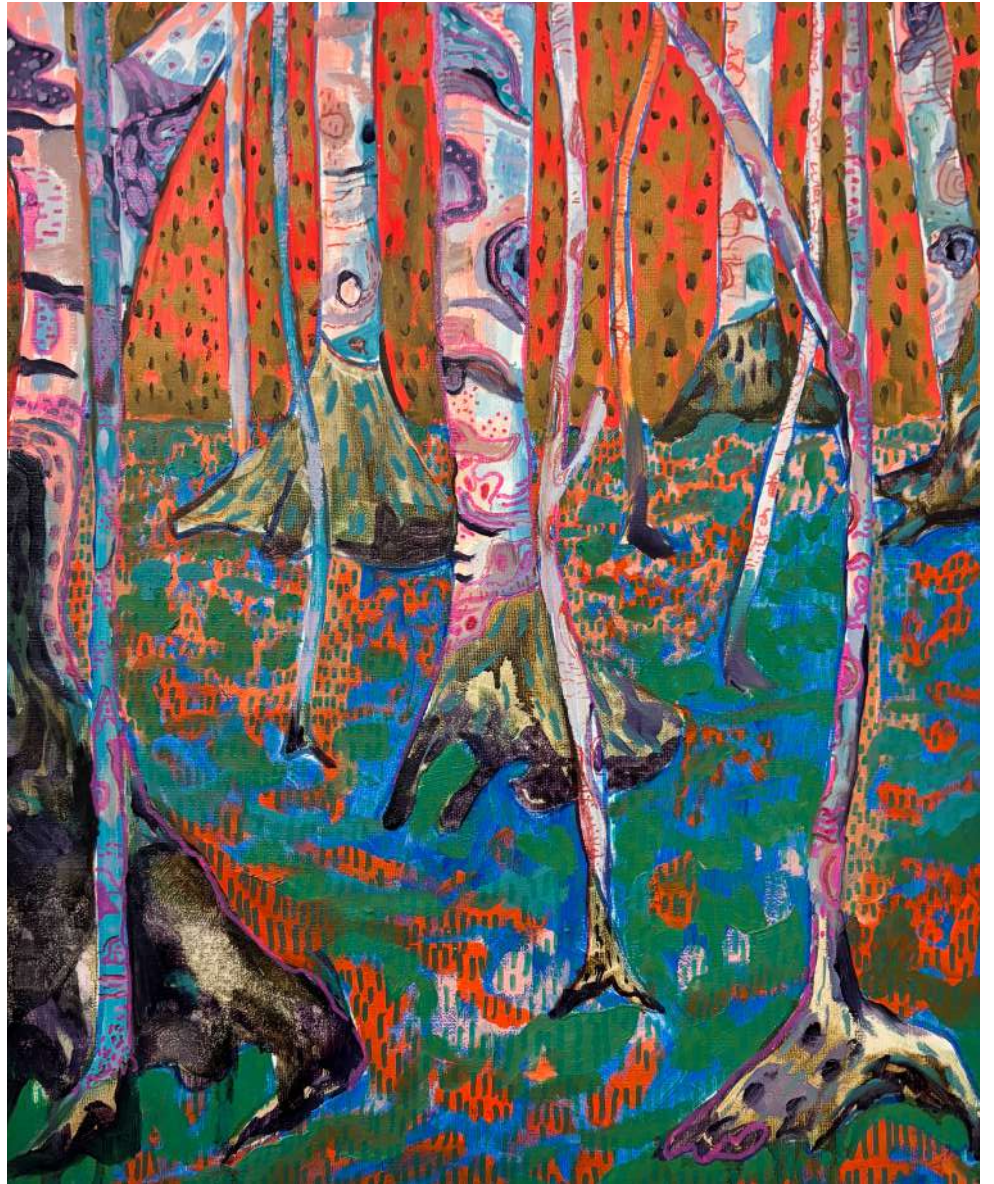
**Back towards the city, as verticals stack up and the night closes in, purple depths of parks, green parakeets, and orange carbon monoxide skies, the same tone as the street lights and shop windows.**

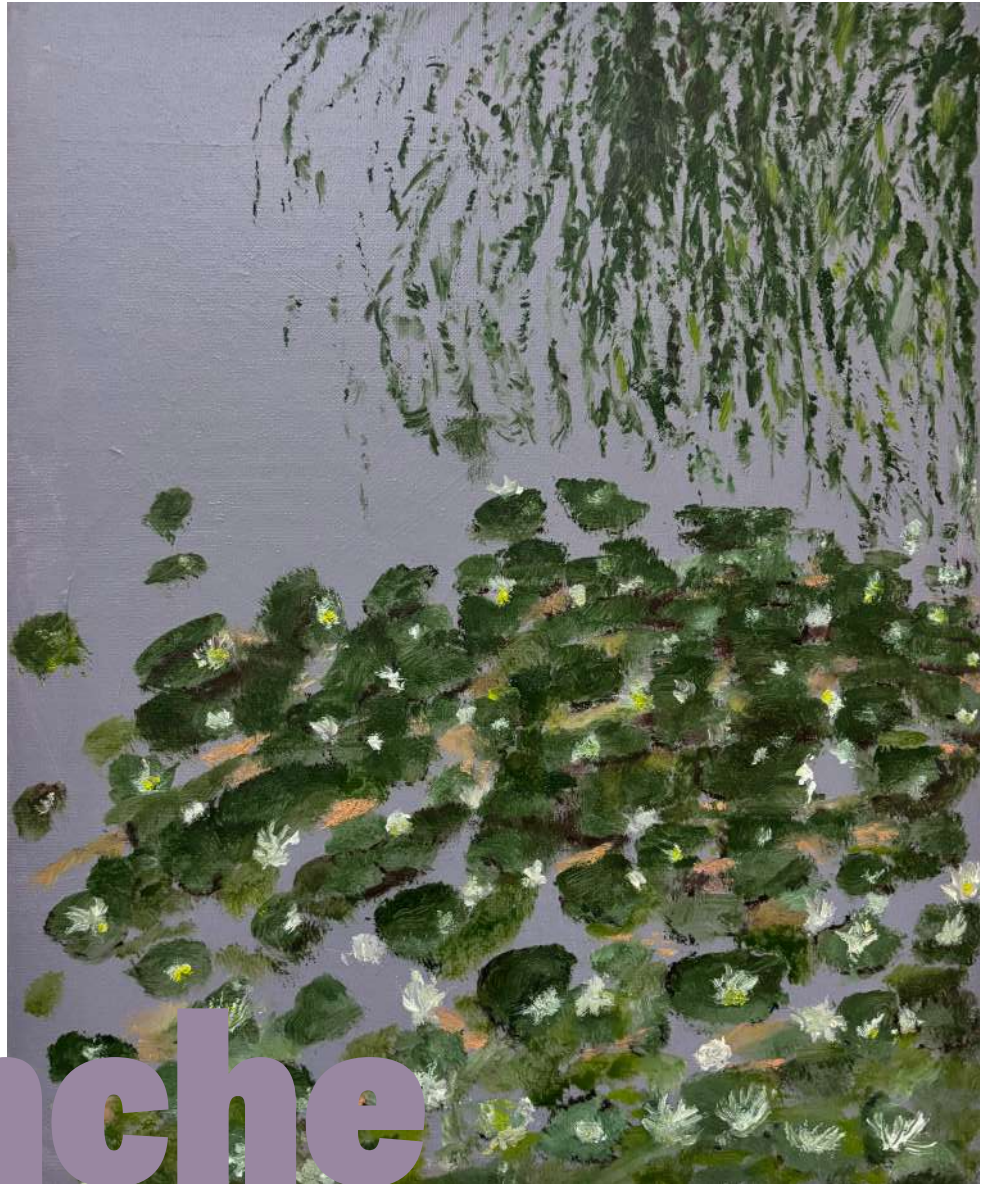
**The artists in this exhibition at Core Arts engage with the history of landscape painting; memory, observation, transcription, invention. A Landscape Format: this arrangement can flip and frame in any number of ways. Nods to Constable's painterly flurries, Van Gogh's vortexes of energy and light, dense abstractions and landscape photography. Each artist has forged a unique language through paint to show us an environment that we have shaped, and which shapes us.**

**Dr. Sadie Murdock**



**Ben**

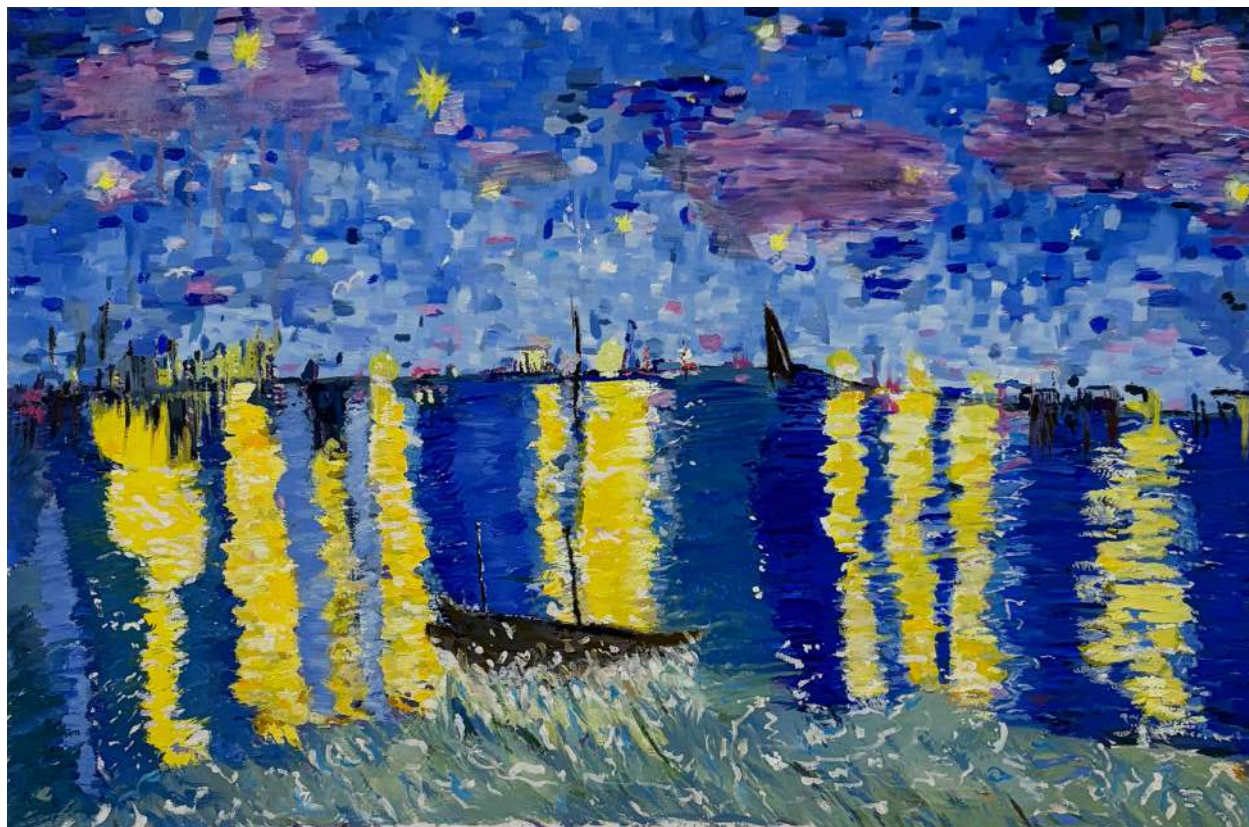




**Blanche**



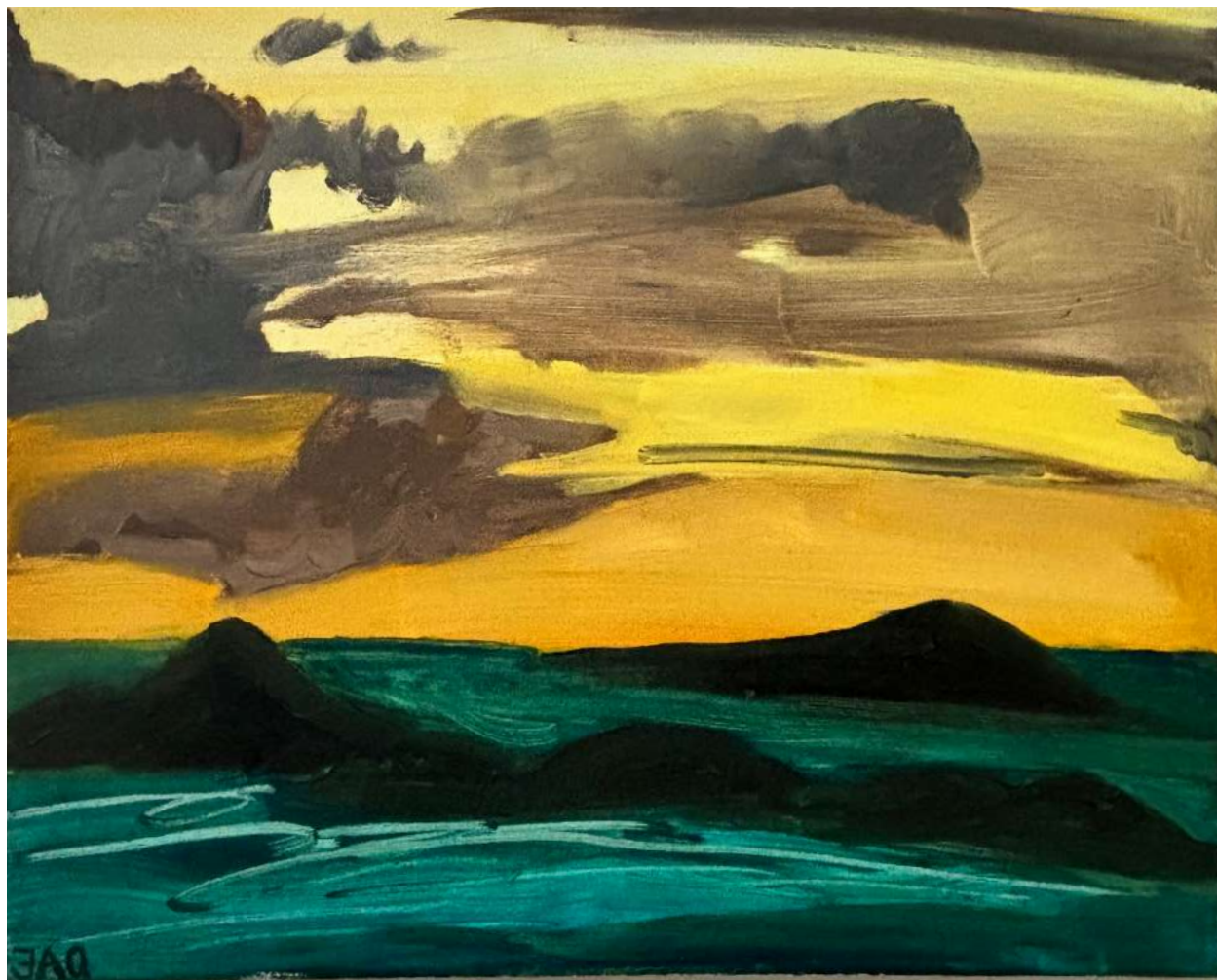






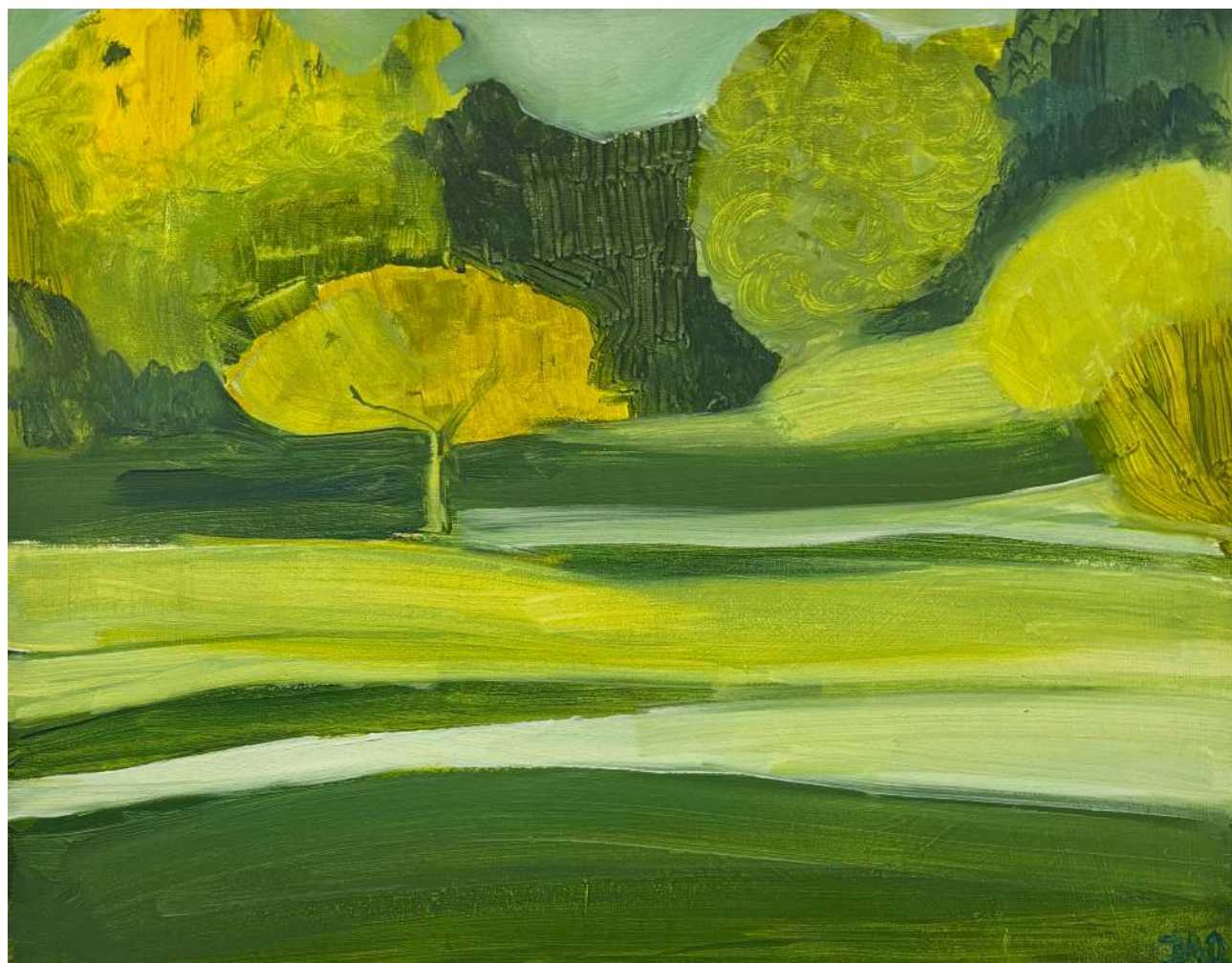
**Jaq**



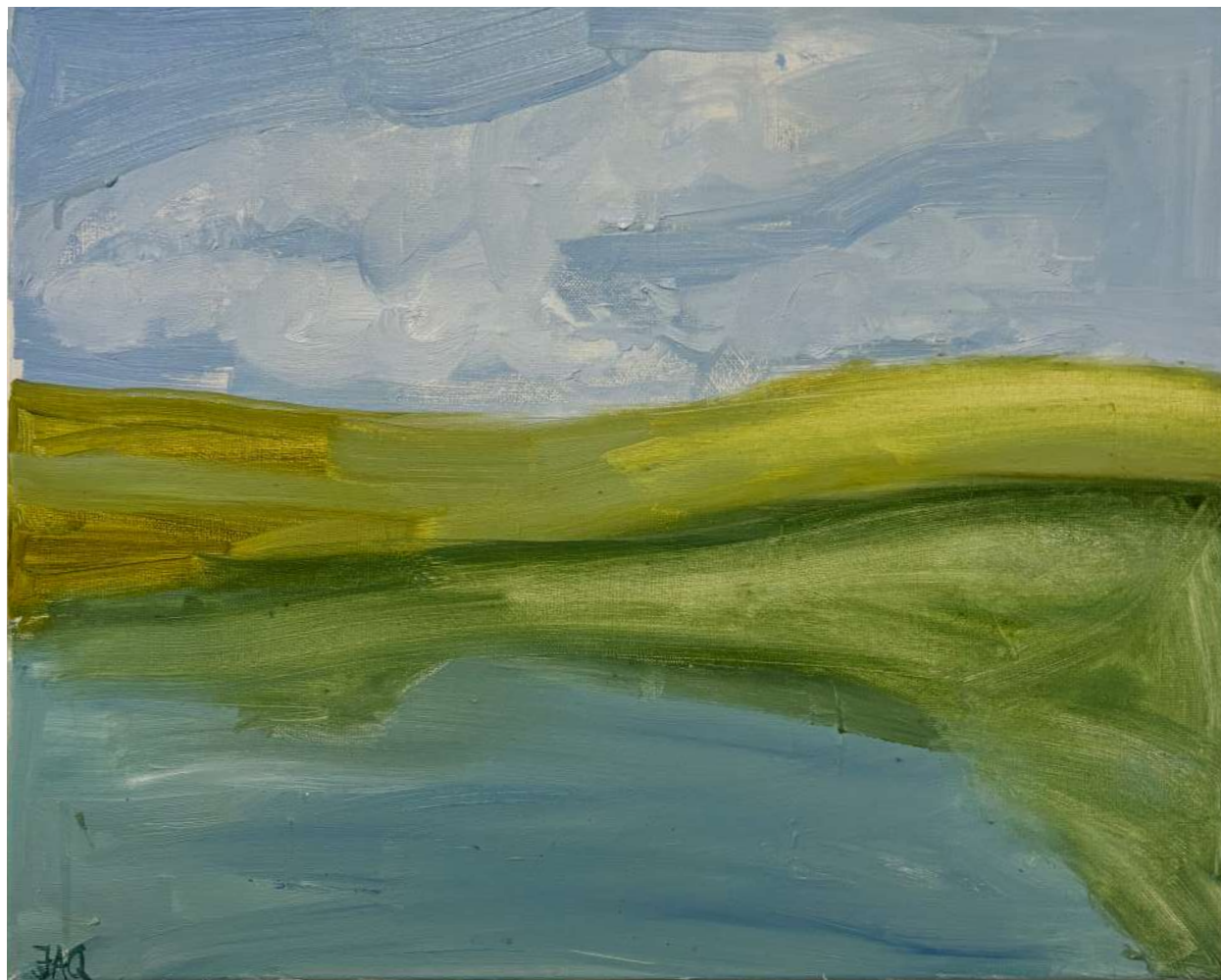


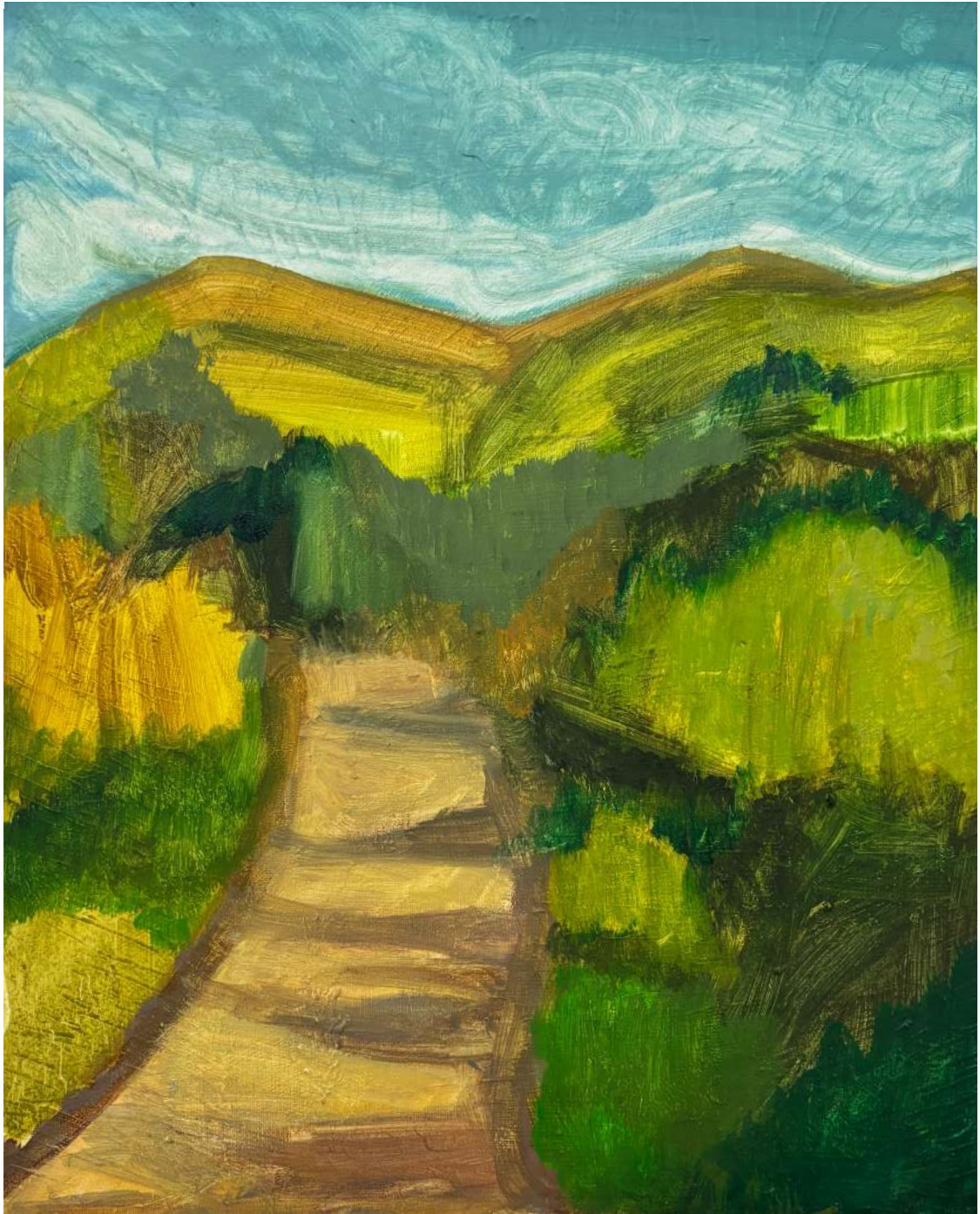




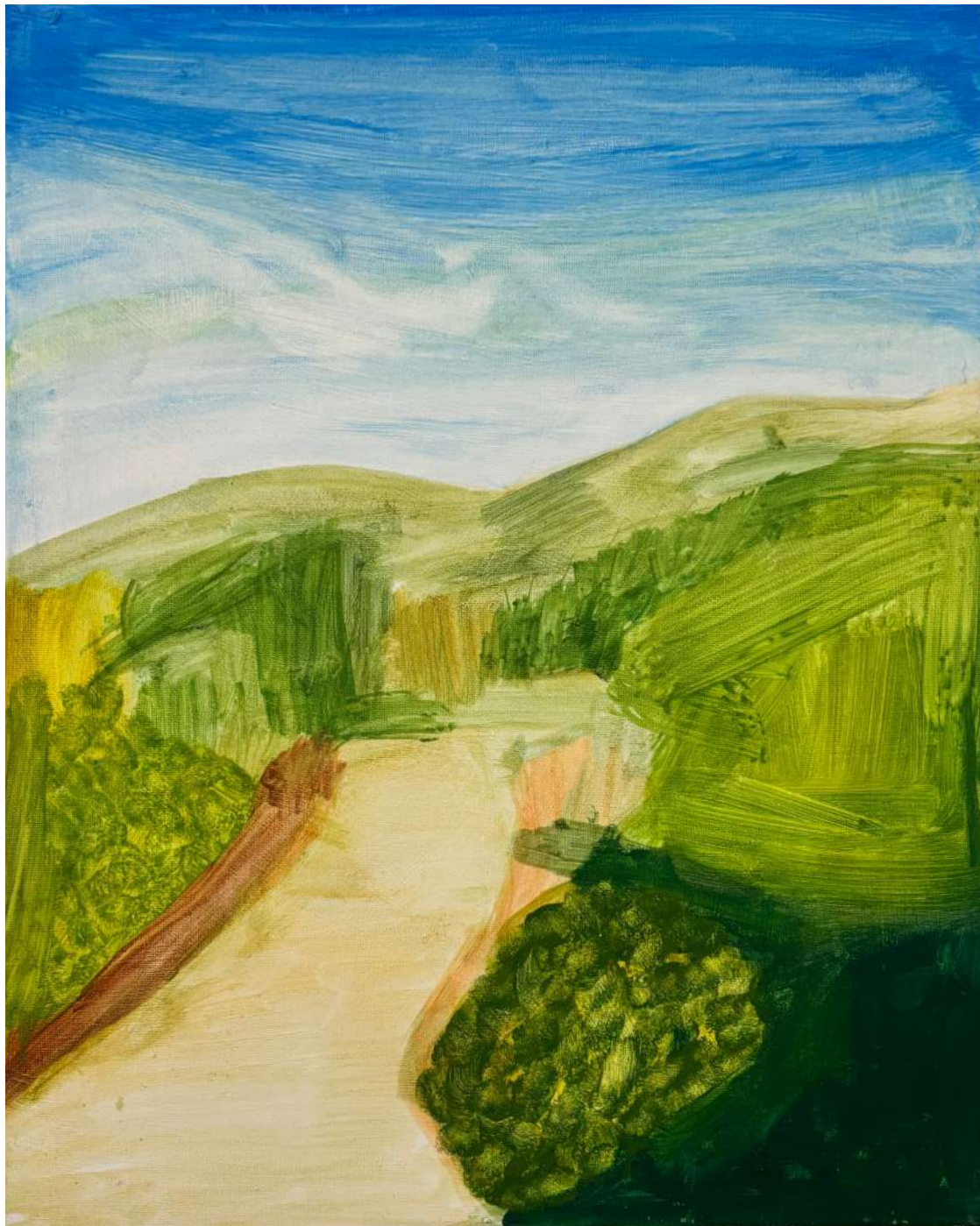


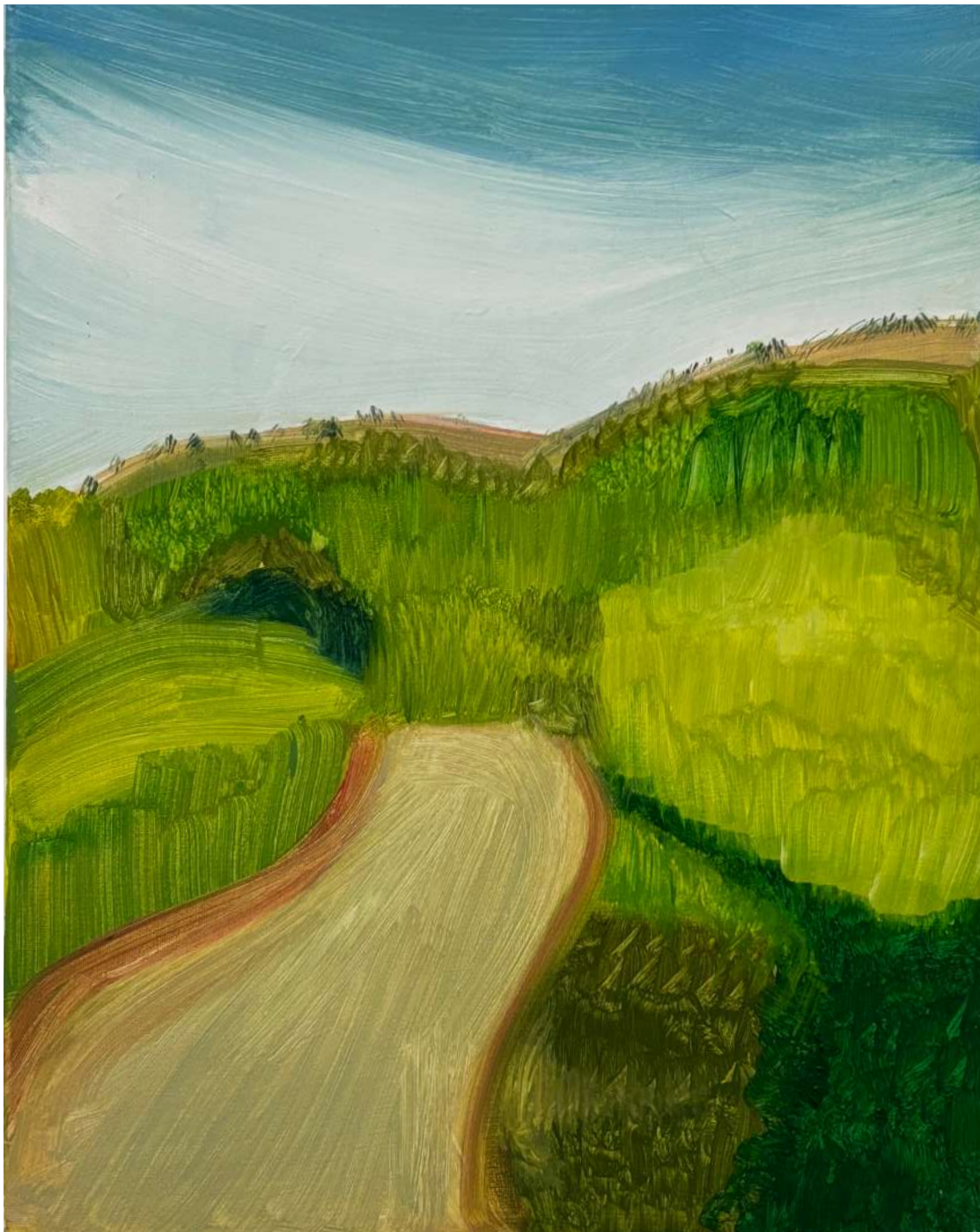






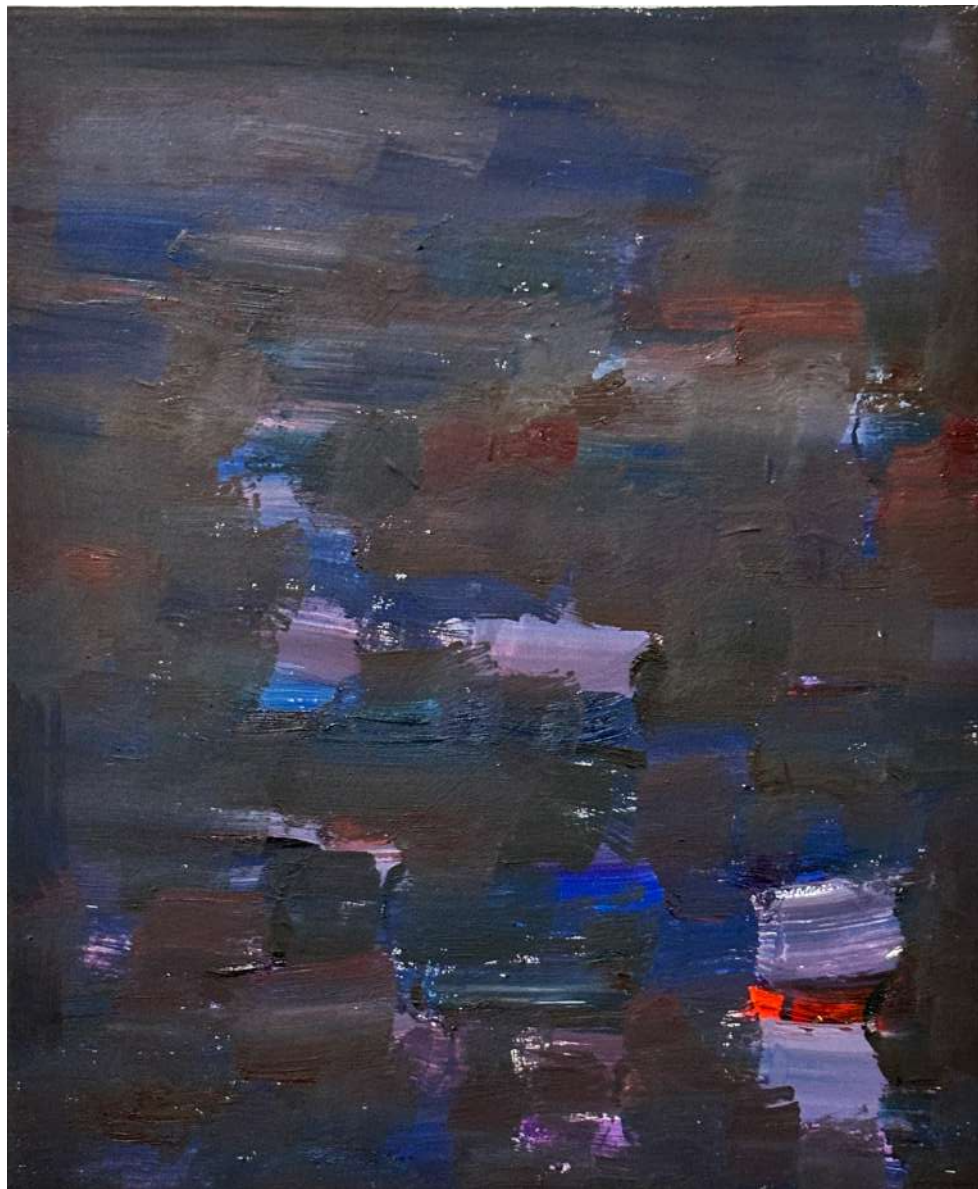


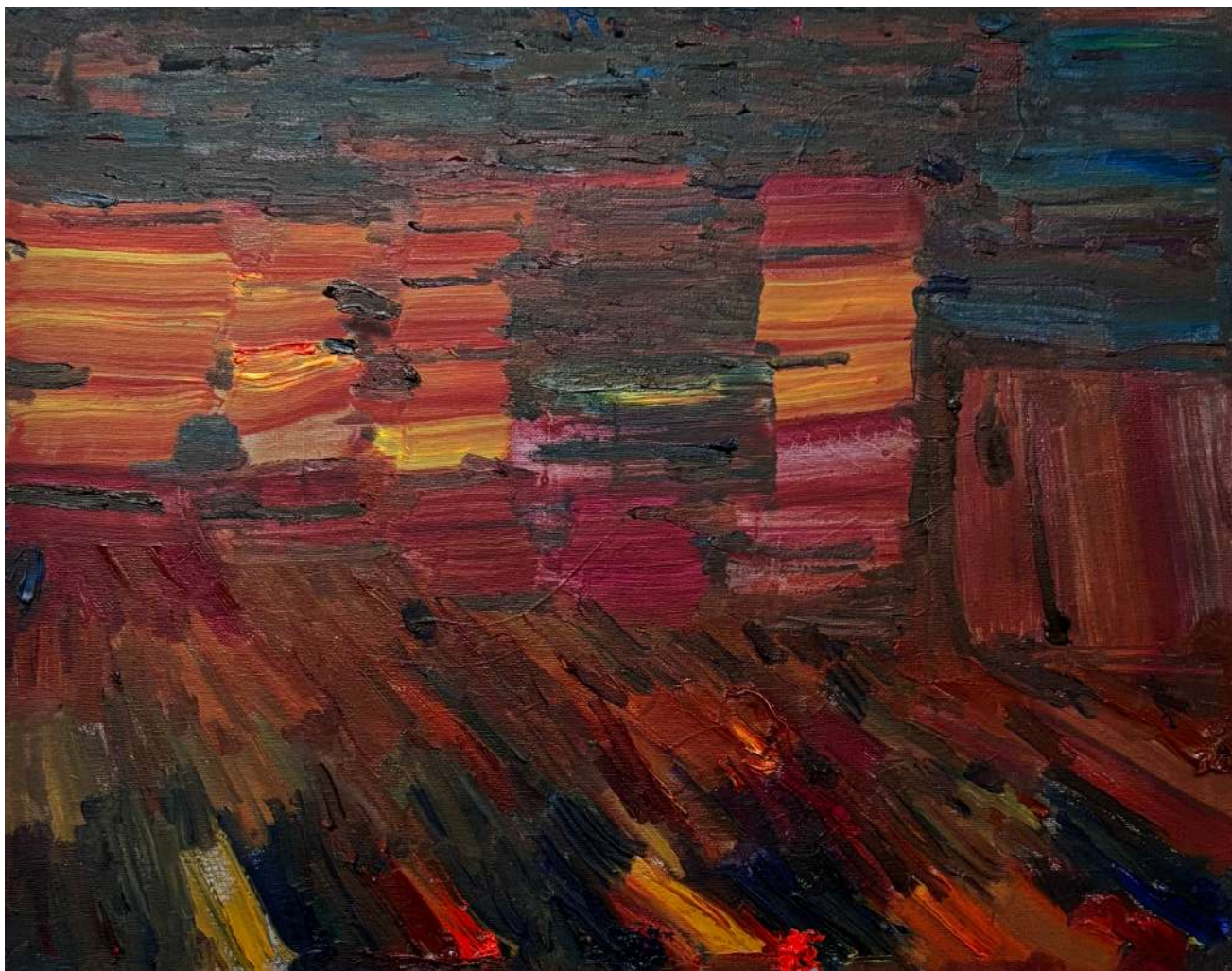




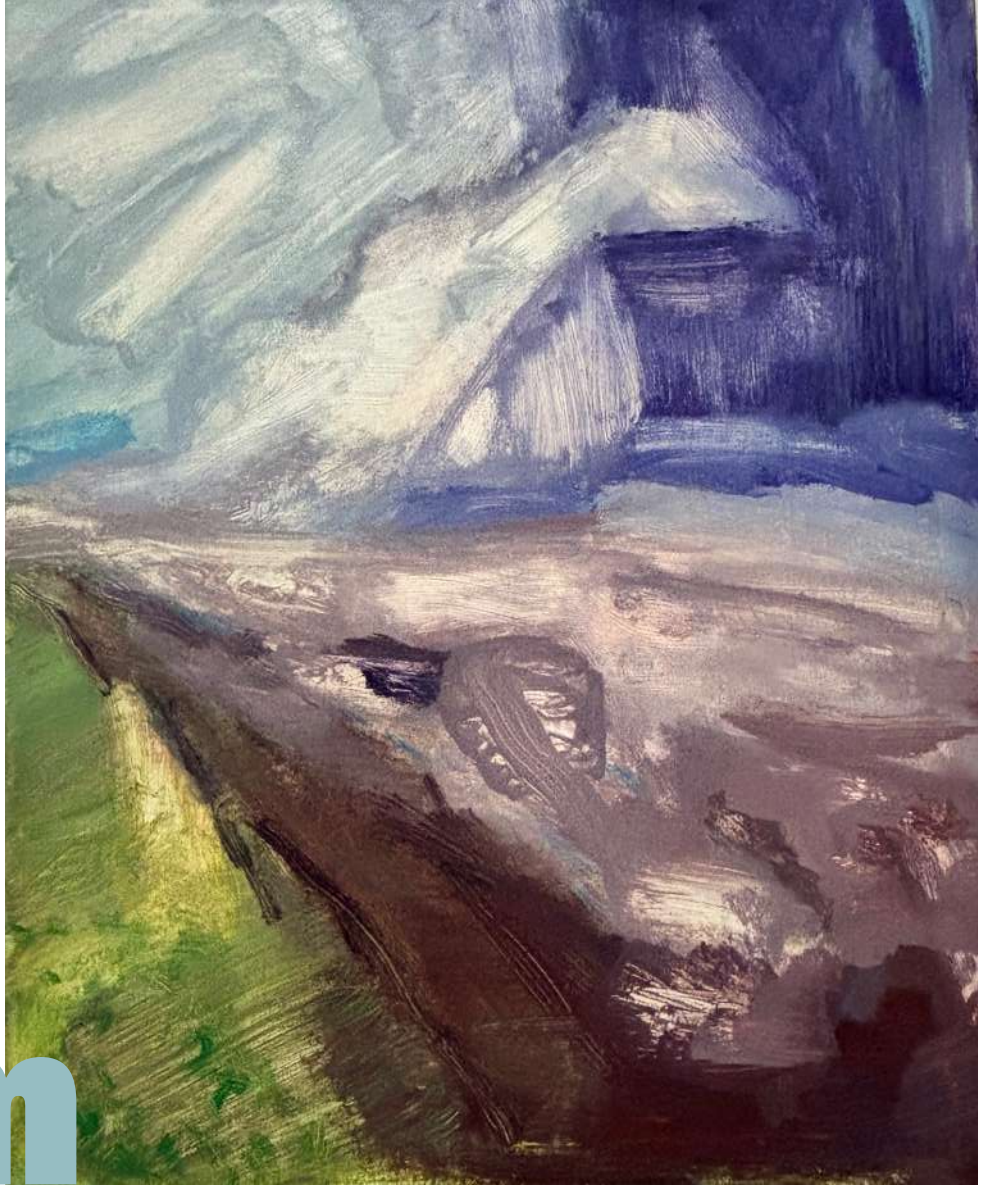


**Min**





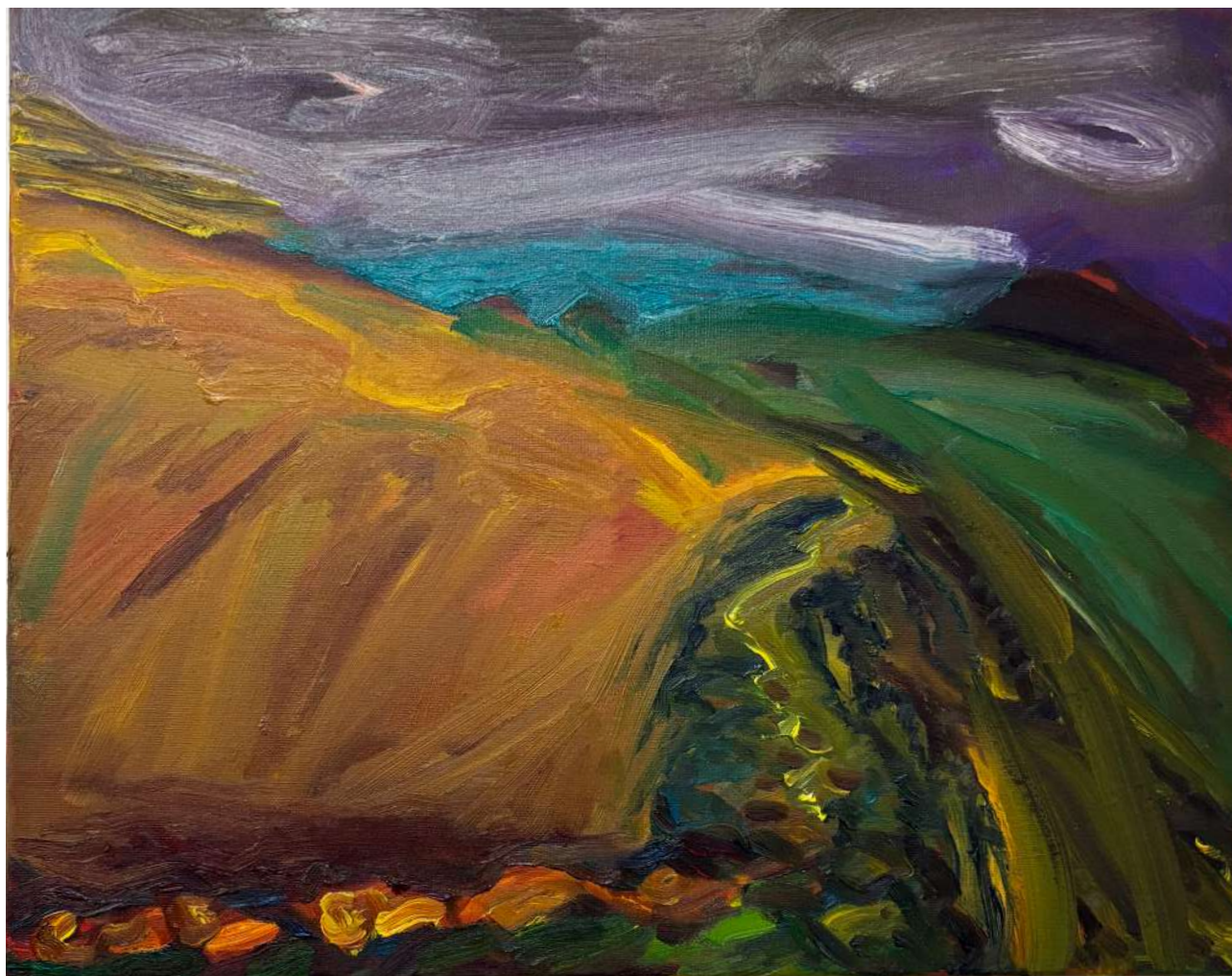


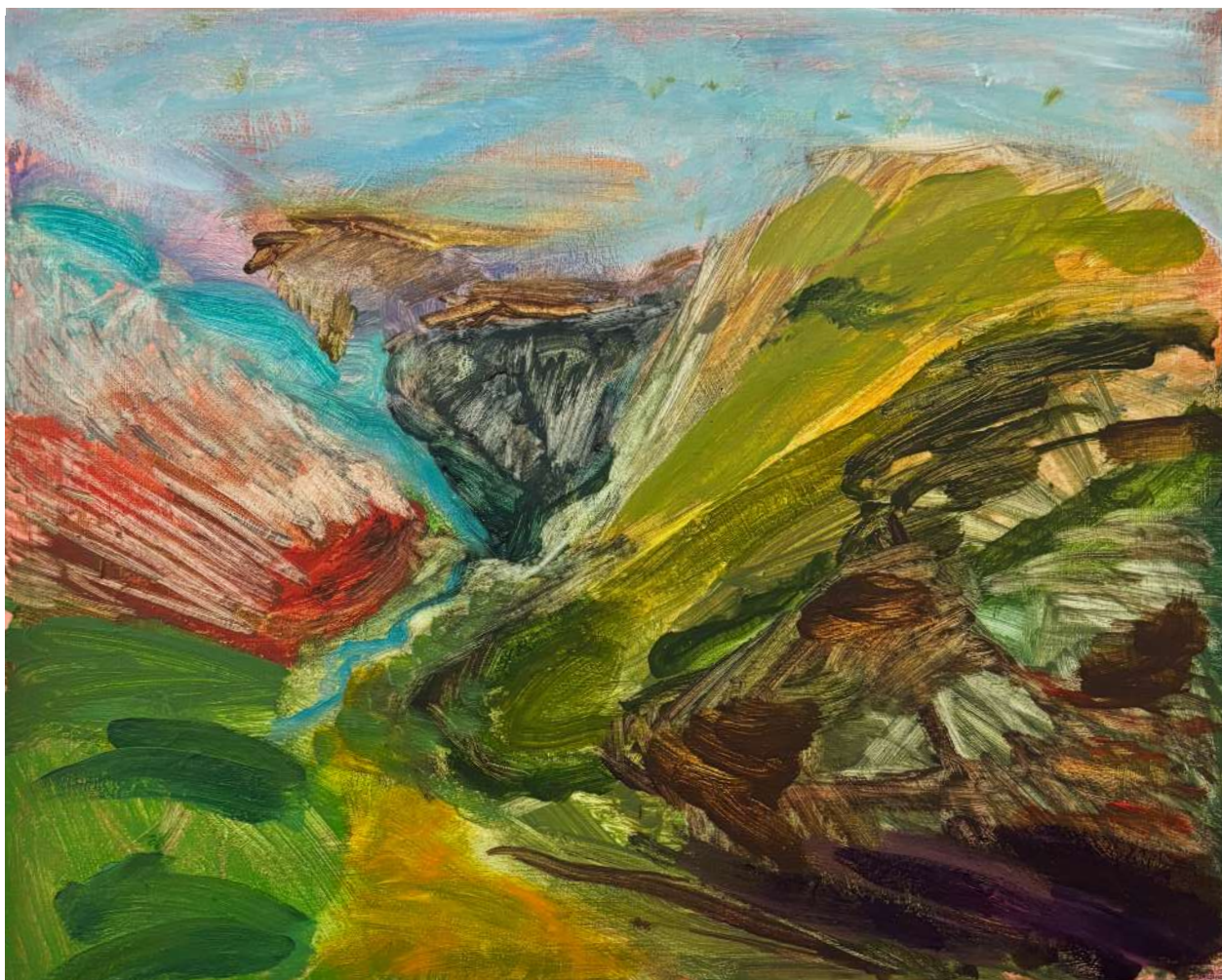


Liam













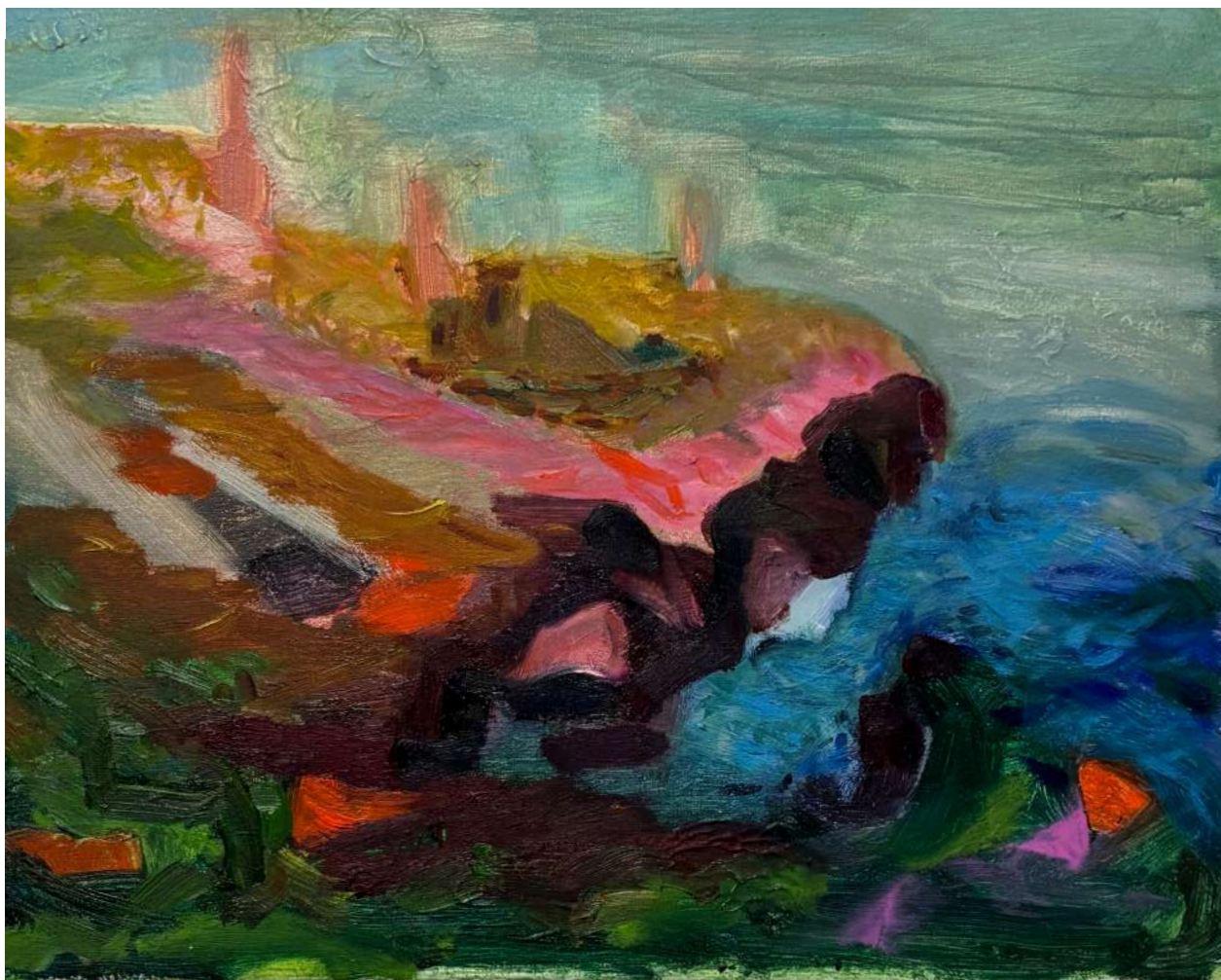














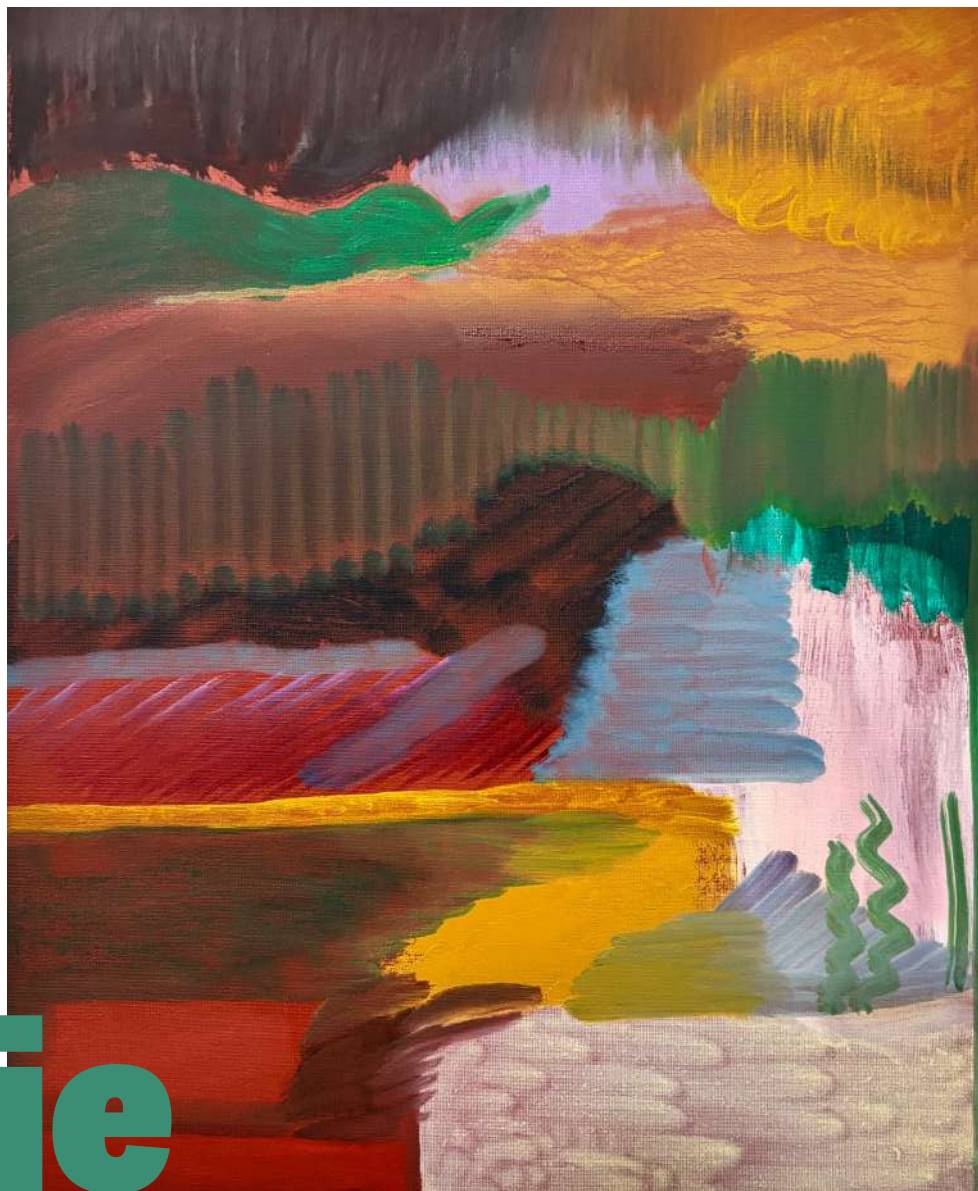








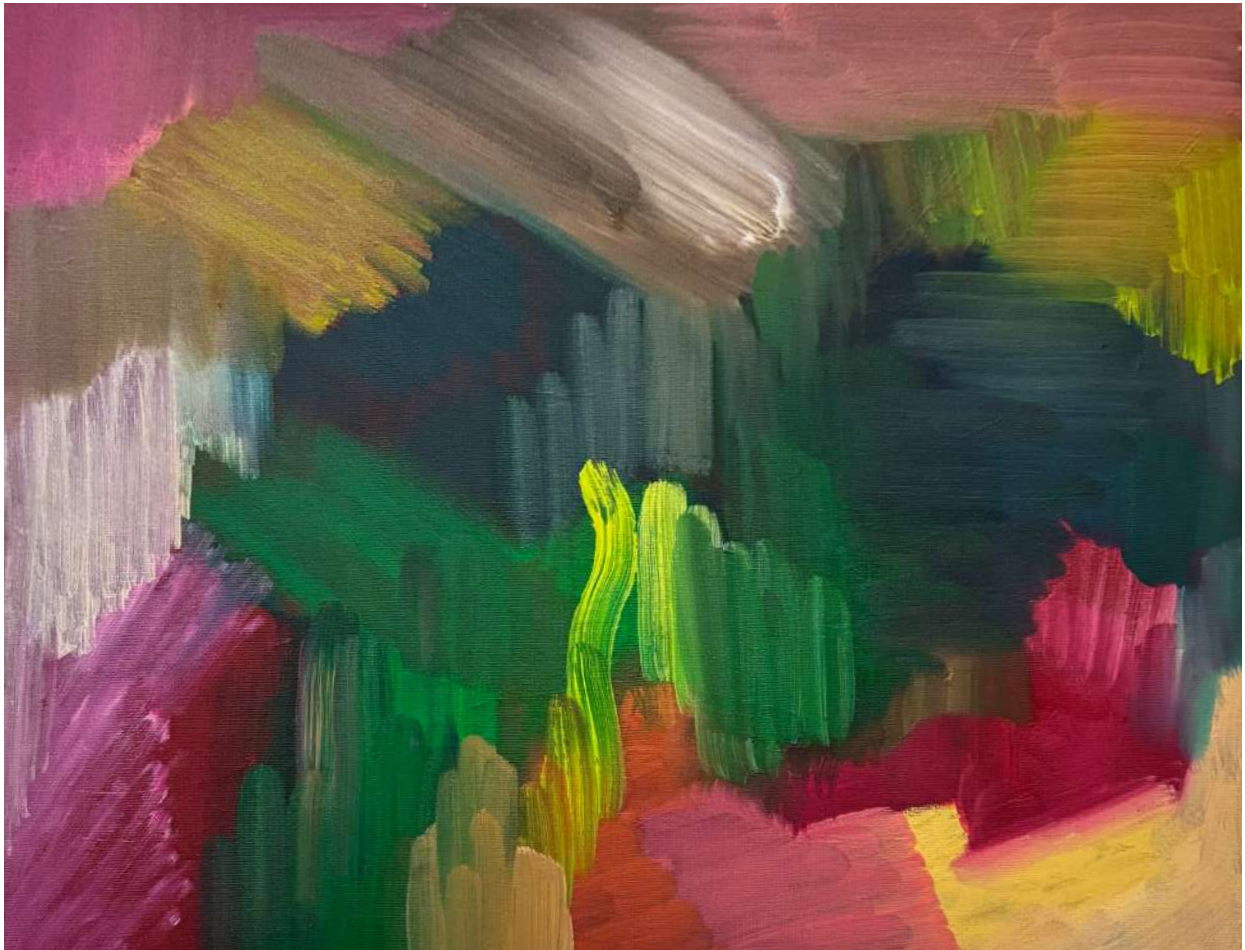




**Lizzie**

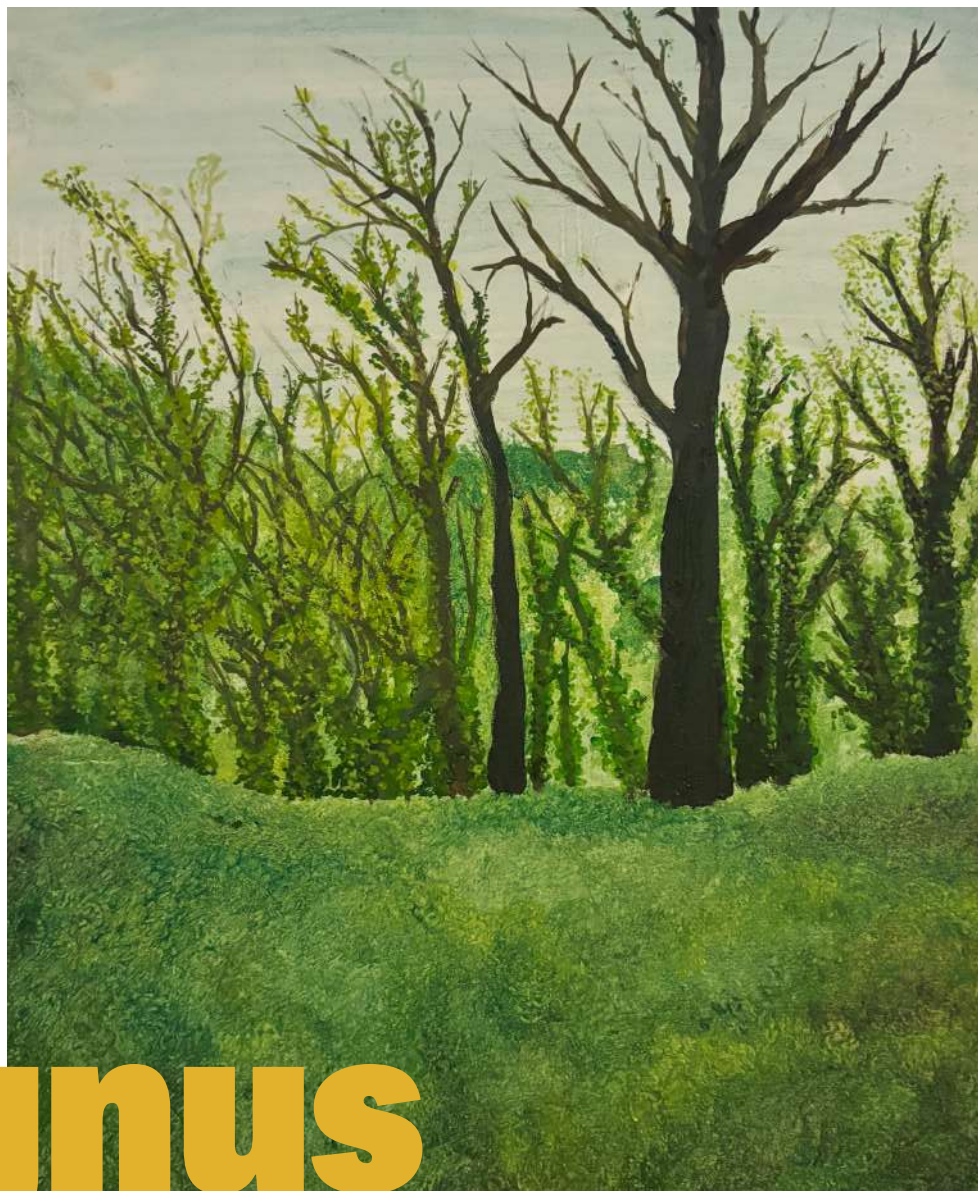












**Magnus**





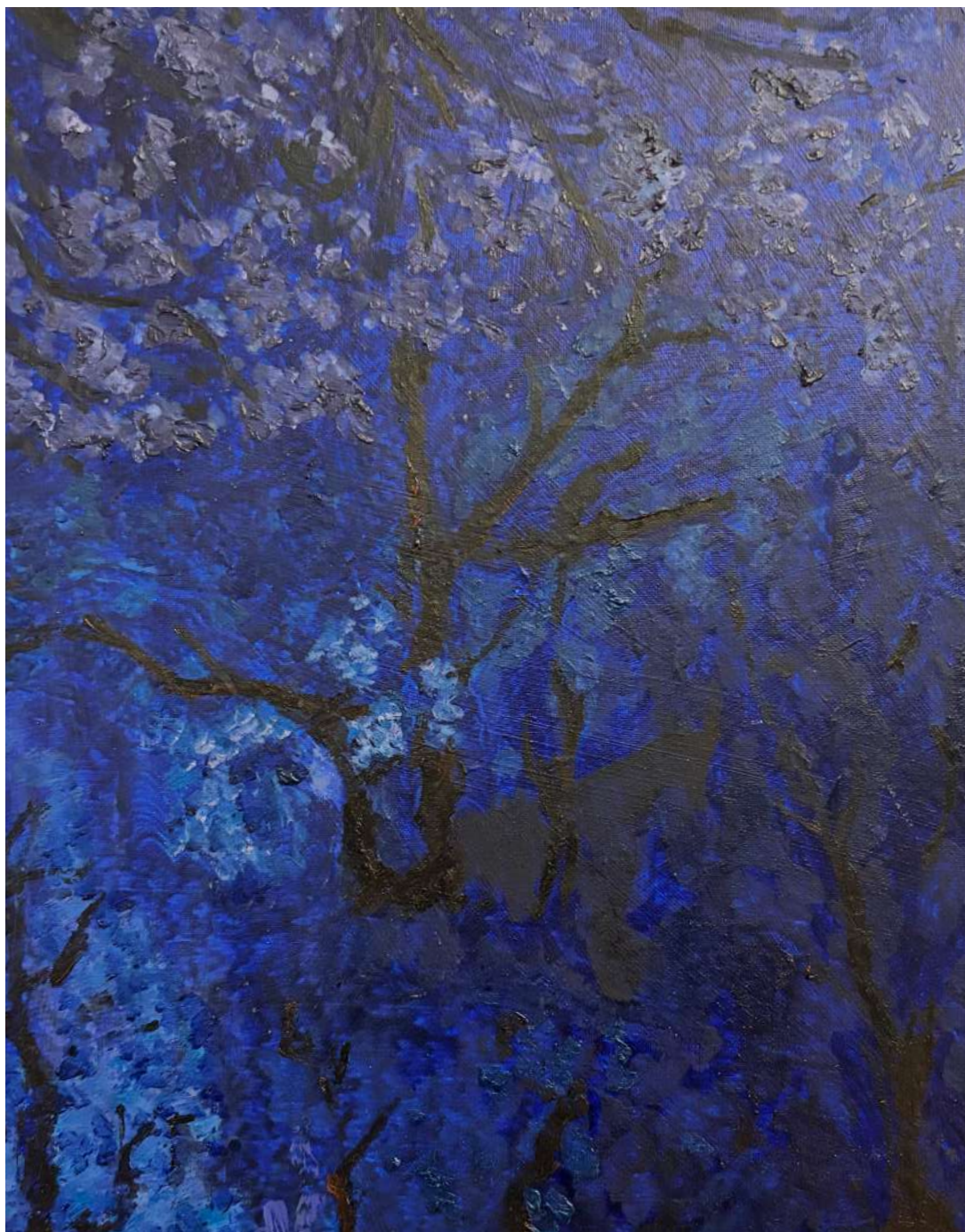


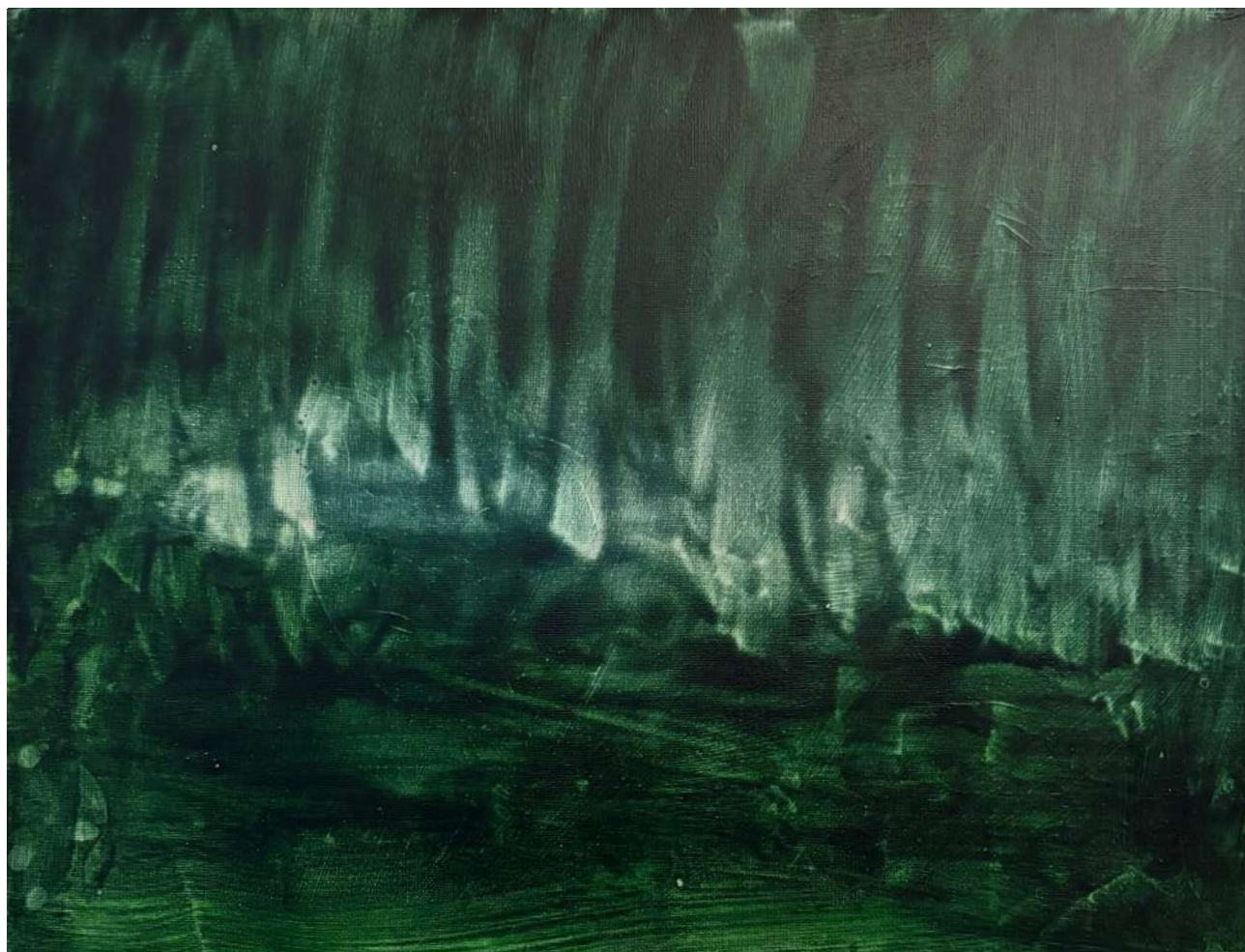




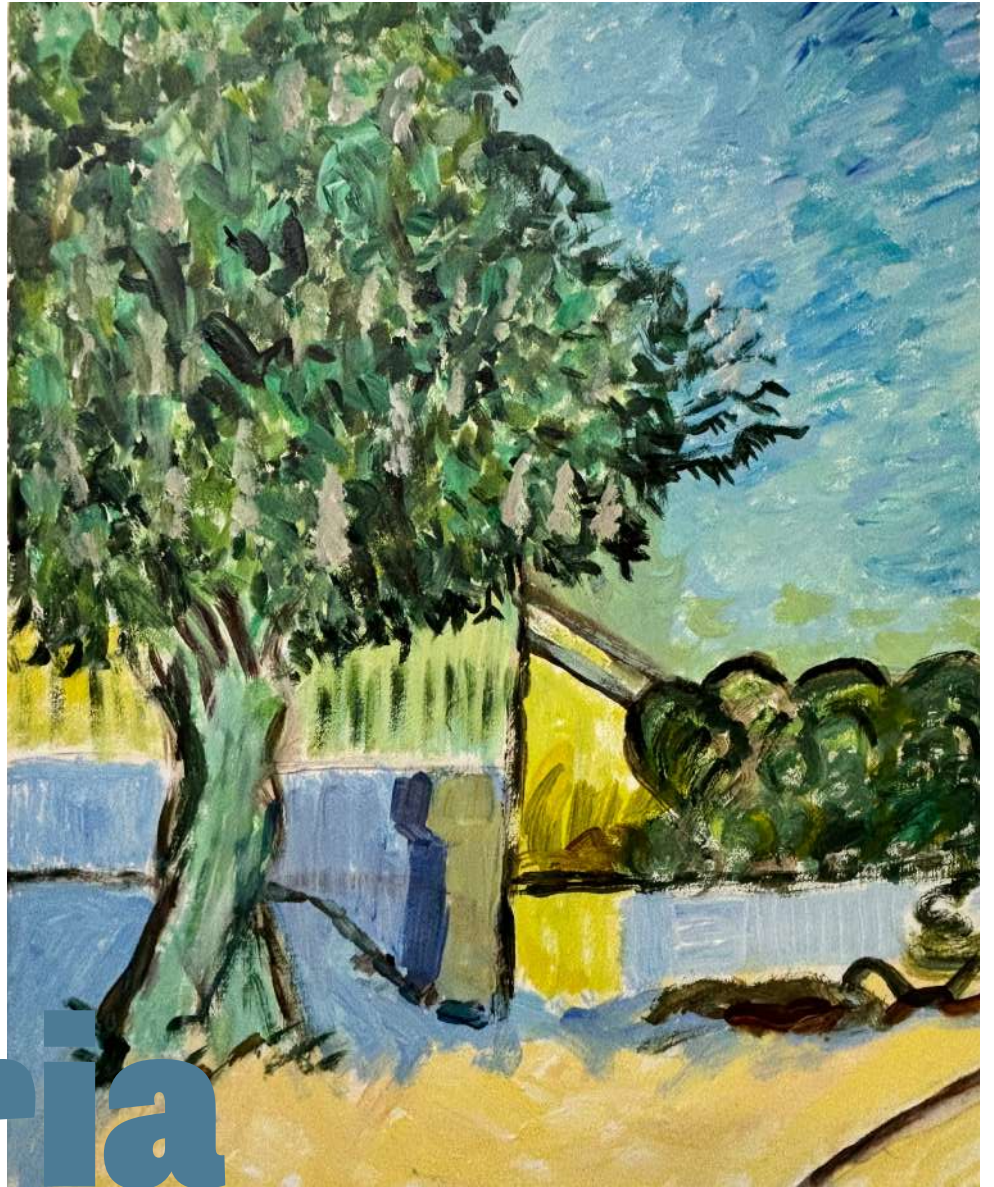








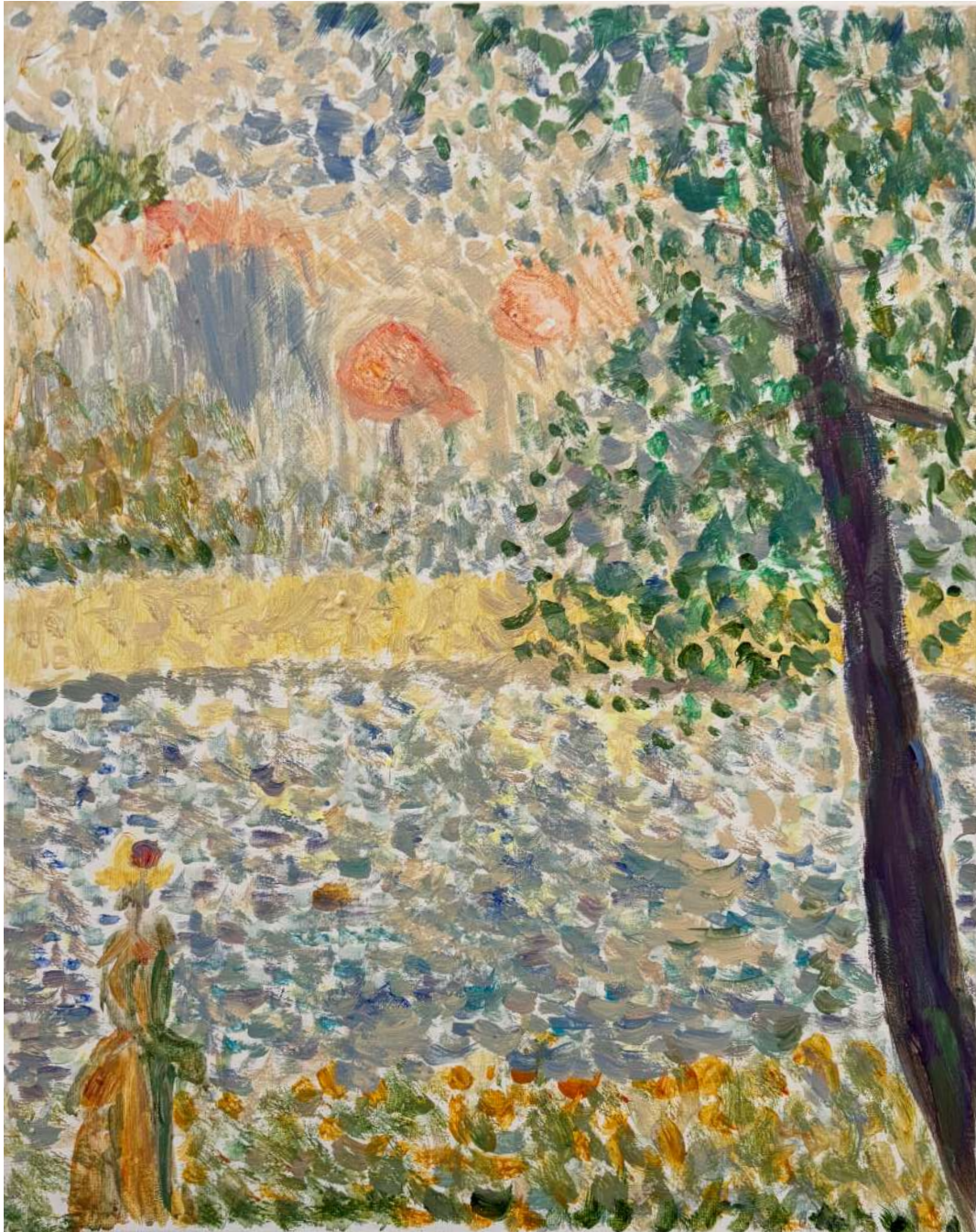




**Maria**











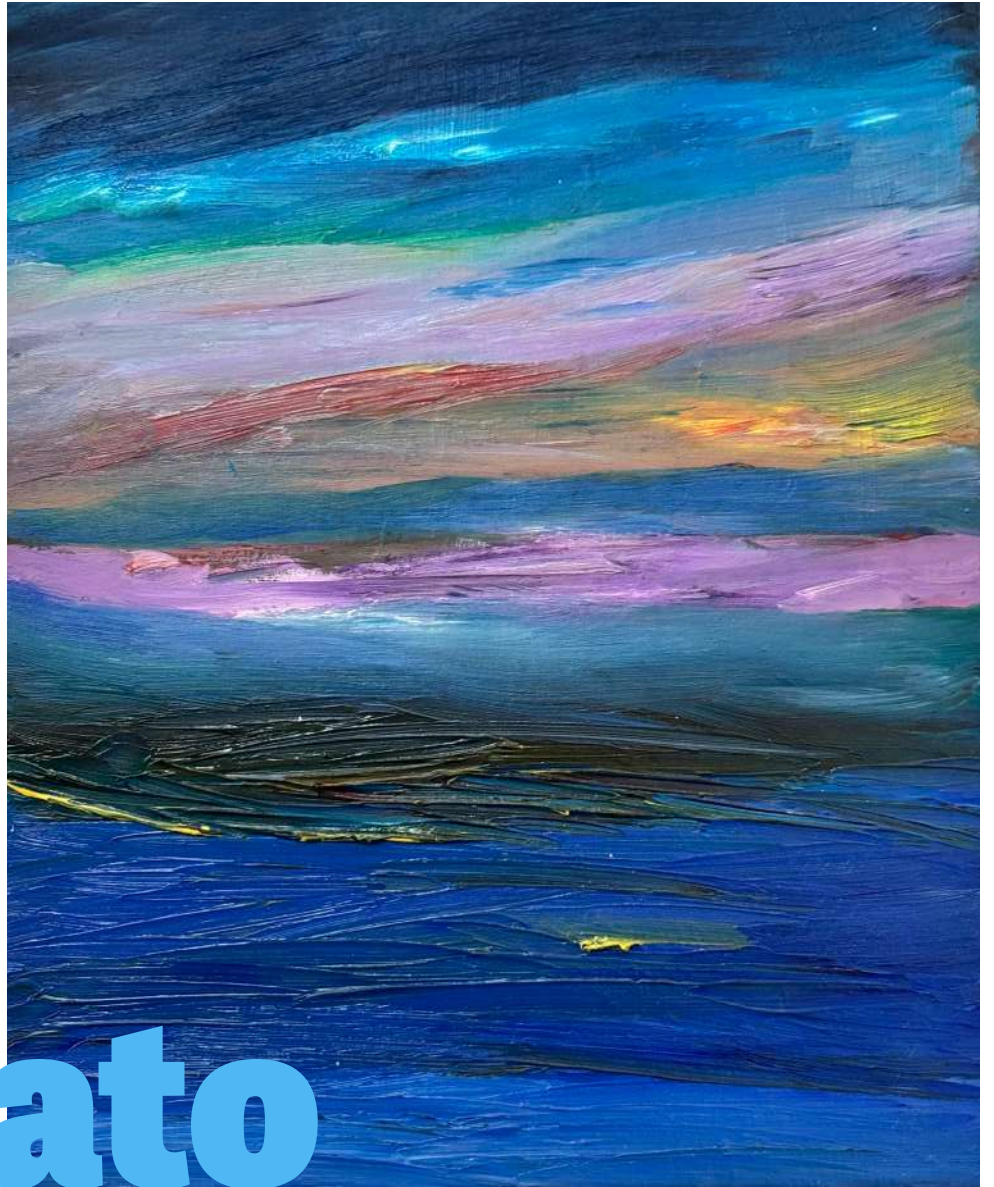




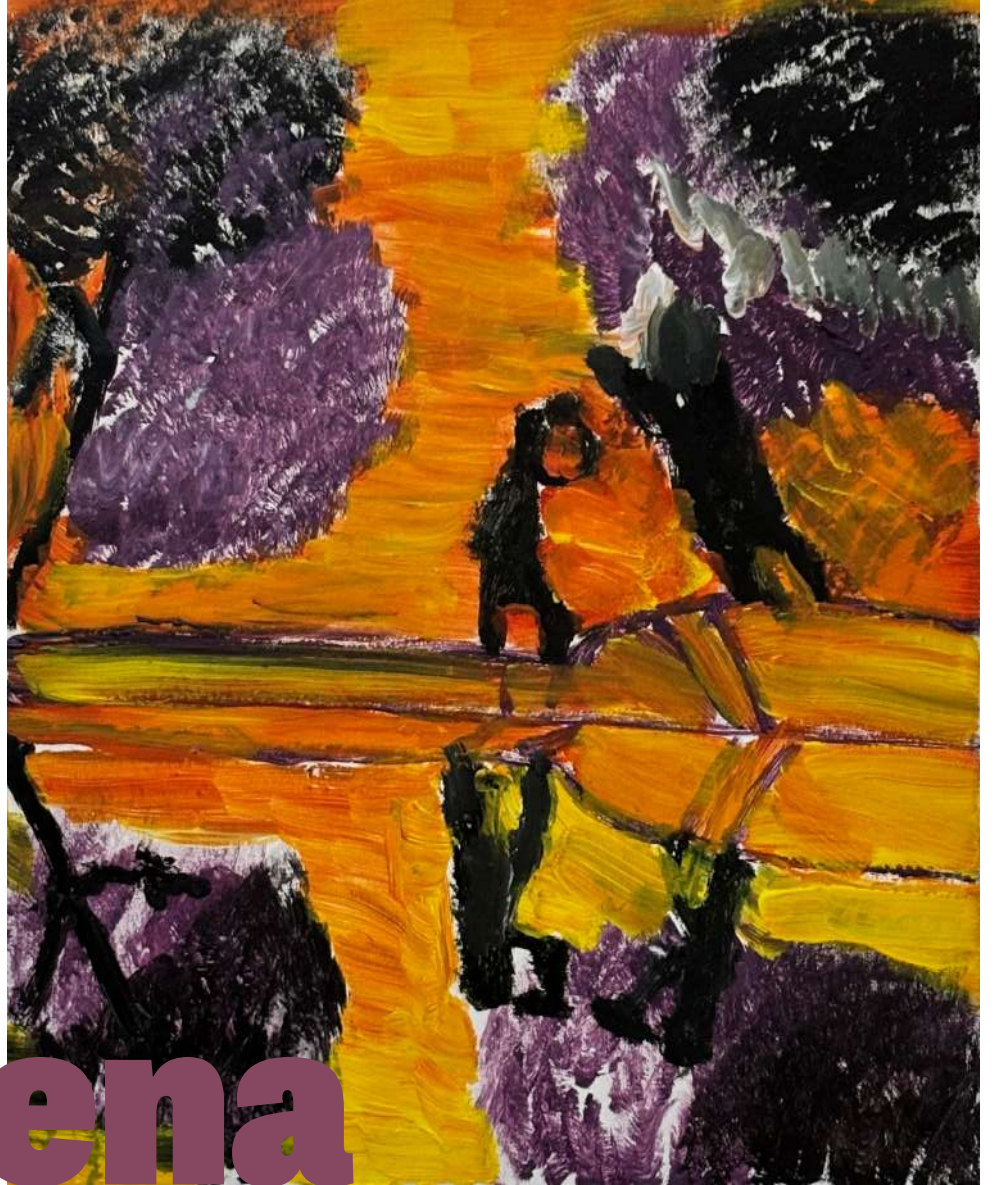


**Matthew**



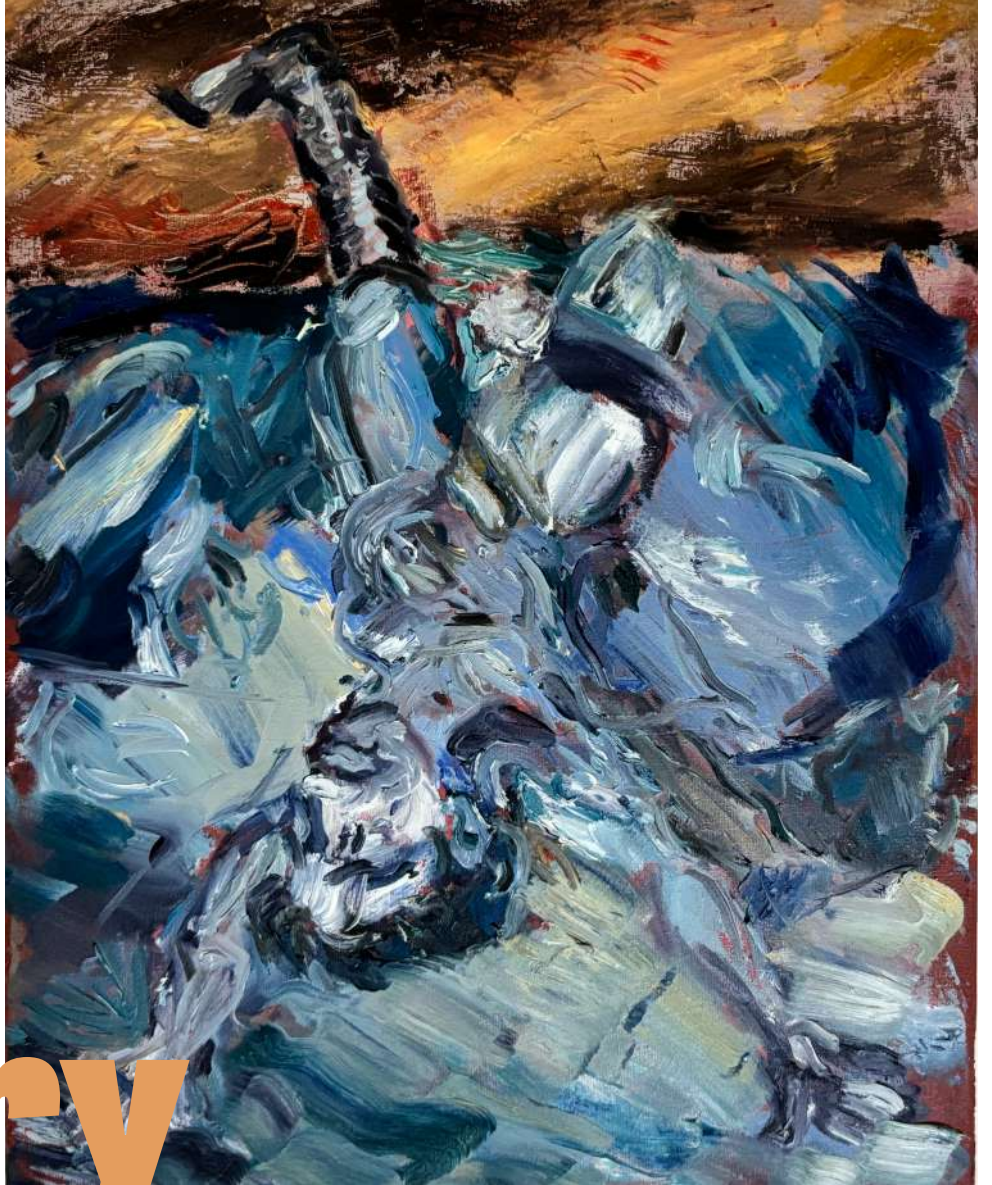


**Renato**



**Serena**

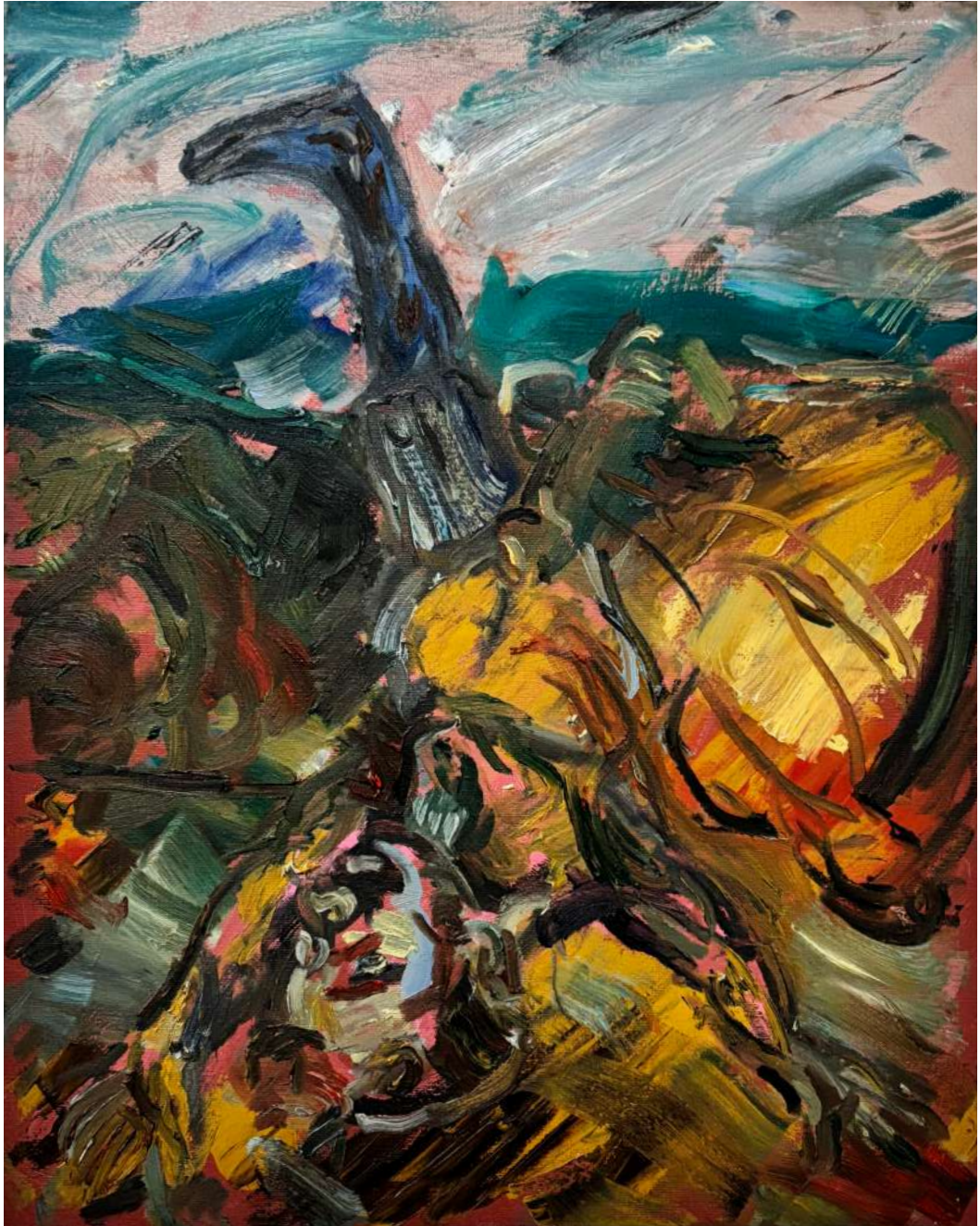




**Terry**













**Core Arts exist to promote the artistic and creative abilities of people who experience severe and enduring mental health issues.**

**Core Arts, 1 St Barnabas Terrace, London E9 6DJ**

**020 8533 3500 | [mail@corearts.co.uk](mailto:mail@corearts.co.uk)**

**[www.facebook.com/coreartshackney](https://www.facebook.com/coreartshackney)**

**[www.twitter.com/coreartshackney](https://www.twitter.com/coreartshackney)**

**[www.instagram.com/coreartshackney/](https://www.instagram.com/coreartshackney/)**

**Charity no: 1043588**

**Company no: 2985939**

