

Creating beats lesson 14: 24th July 2020

I hope you are enjoying this series about creating beats, whether you have the chance of practising in logic or listening to the tunes on youtube.

There are still many techniques I would like to share with you. Today we will continue learning about the hi-hat. Please, if you missed last week's handout, check that one first.

Today's lesson is on version 2 of opening the Hi-hat for the value of a 16th note. This commonly occurs by opening the hi-hat with the foot and playing in on the 'e', then immediately closing it with the foot on the 'and'. Or, opening the hi-hat with the foot and playing it on the 'ah' and then immediately closing it with the foot on the next downbeat. Wherever this version is played the hihat is closed on the 16th note immediately following the open note. (you need the sound-pedal hat) for closing of the hi-hat

BREAKS



"Rocksteady"

Aretha Franklin

Young, Gifted, and Black (Atlantic, 1972)

Speed = 105 BPM

https://www.youtube.com/watch?v=EXJx2NnnxA0&list=RDEXJx2NnnxA0&start_radio=1&t=3

Look closely at the minutes. This break happens at minute 2:29 after the horns, where the lyrics is:

Rock steady baby

Rock steady, woo

Rock steady

This break features the great Bernard Purdie on drums. Notice how he uses the open hihat on the "e" of 3, the "a" of 3 and the "e" of 4 at the end of this four bar break (Count the beats, you know, always count).

1 e & a 2 e & a 3 e & a 4 e & a

Remember the signs (o) open hi hat is hit with a stick

(+) closed hi hat is hit with the stick

X at the bottom means that simultaneously with hitting the hi hat closed the pedal is used

Here is how the break above lloyds like in the piano roll.



In case the names are difficult to read, from top to bottom the boxes read:

Open hat

Pedal hat

Closed Hat

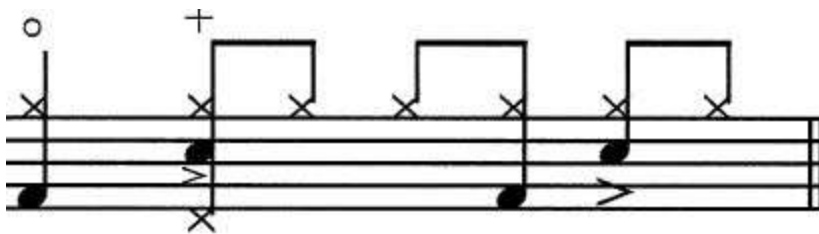
Snare

Kick

The drum, bass and guitar groove of the Intro of **Rocksteady** by Aretha Franklin (Intro used happens at 10 seconds into the song, after the organ), was sampled for **EMPD's "I'm Housin',"** for the album **Strictly Business** (Fresh, 1988) https://www.youtube.com/watch?v=_eLDzovFa70

Another use of the hi-hat (less common): You'll sometimes find tan open hi-hat note on beat 1, with the foot closing the note on bat 2 the open hi-hat note lasts for the full value of a quarter note. This Kind of open hi-hat note can also be found on any beat of the measure.

Open hat Closed hat



Pedal

1	e	&	a	2	e	&	a	3	e	&	a	4	e	&	a
---	---	---	---	---	---	---	---	---	---	---	---	---	---	---	---

1	e	&	a	2	e	&	a	3	e	&	a	4	e	&	a
---	---	---	---	---	---	---	---	---	---	---	---	---	---	---	---

Open hat

Closed hat

Pedal hat

Snare

Kick



Well done for making it to the end of today's lesson.

I hope you enjoyed learning the hi-hat techniques from this week. That was version 2 and 3. Remember to review this hand out again sometime. If you have a youtube account it is easy to add the videos we are studying to a playlist so you have them all organised.

I am looking forward to continuing studying with you next week.